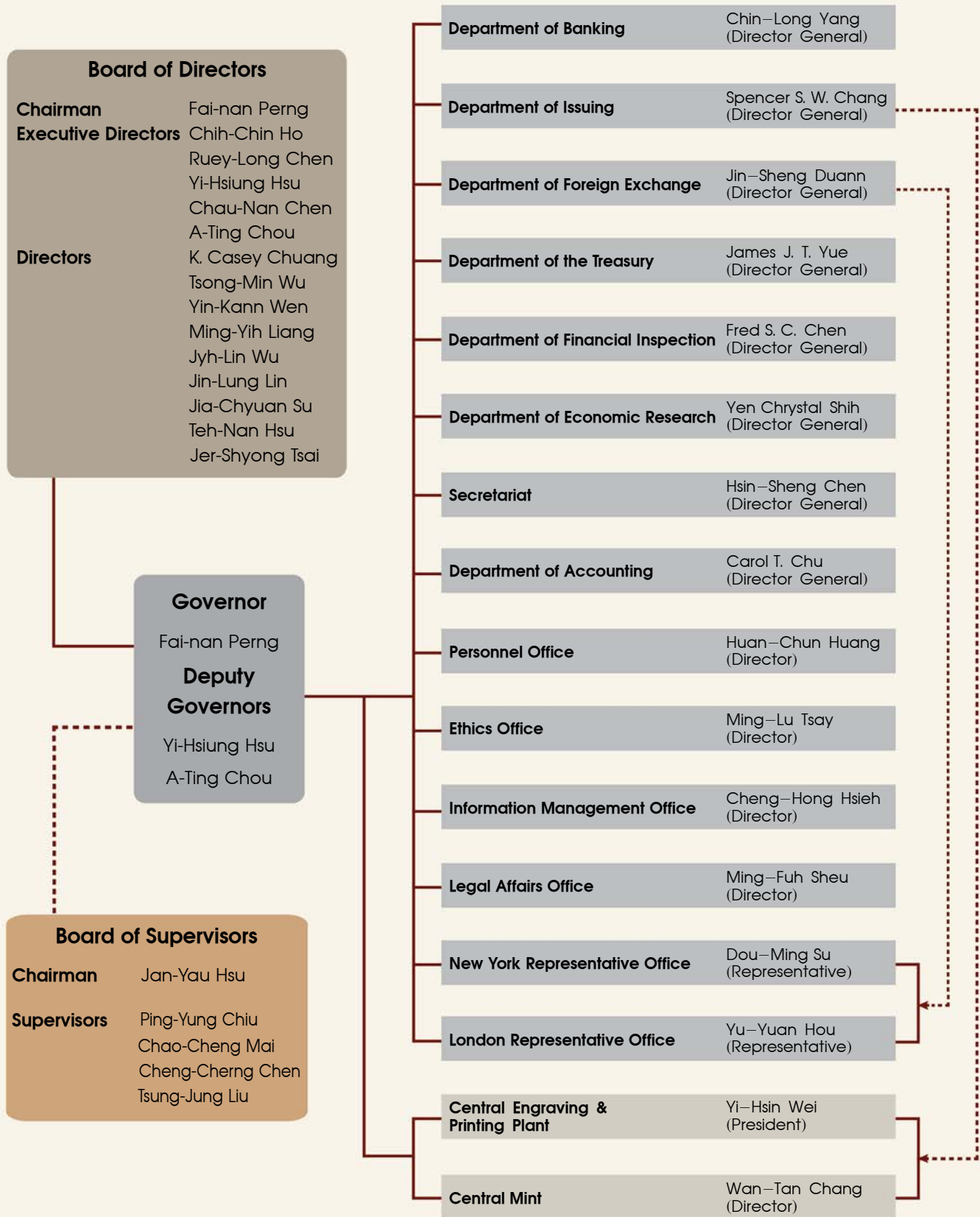


Organization and Management of the CBC



— under - - - - - supervise

As of March 2007



Chairman
Board of Directors
Governor Fai-nan Perng



Executive
Director Chih-Chin Ho



Executive
Director Ruey-Long Chen



Executive
Director
Deputy Governor Yi-Hsiung Hsu



Executive
Director Chau-Nan Chen



Executive
Director
Deputy Governor A-Ting Chou



Director K. Casey Chuang



Director Tsong-Min Wu



Director Yin-Kann Wen



Director Ming-Yih Liang



Director Jyh-Lin Wu



Director Jin-Lung Lin



Director Jia-Chyuan Su



Director Teh-Nan Hsu



Director Jer-Shyong Tsai



Chairman
Board of Supervisors Jan-Yau Hsu



Supervisor Ping-Yung Chiu



Supervisor Chao-Cheng Mai



Supervisor Cheng-Cheng Chen



Supervisor Tsung-Jung Liu