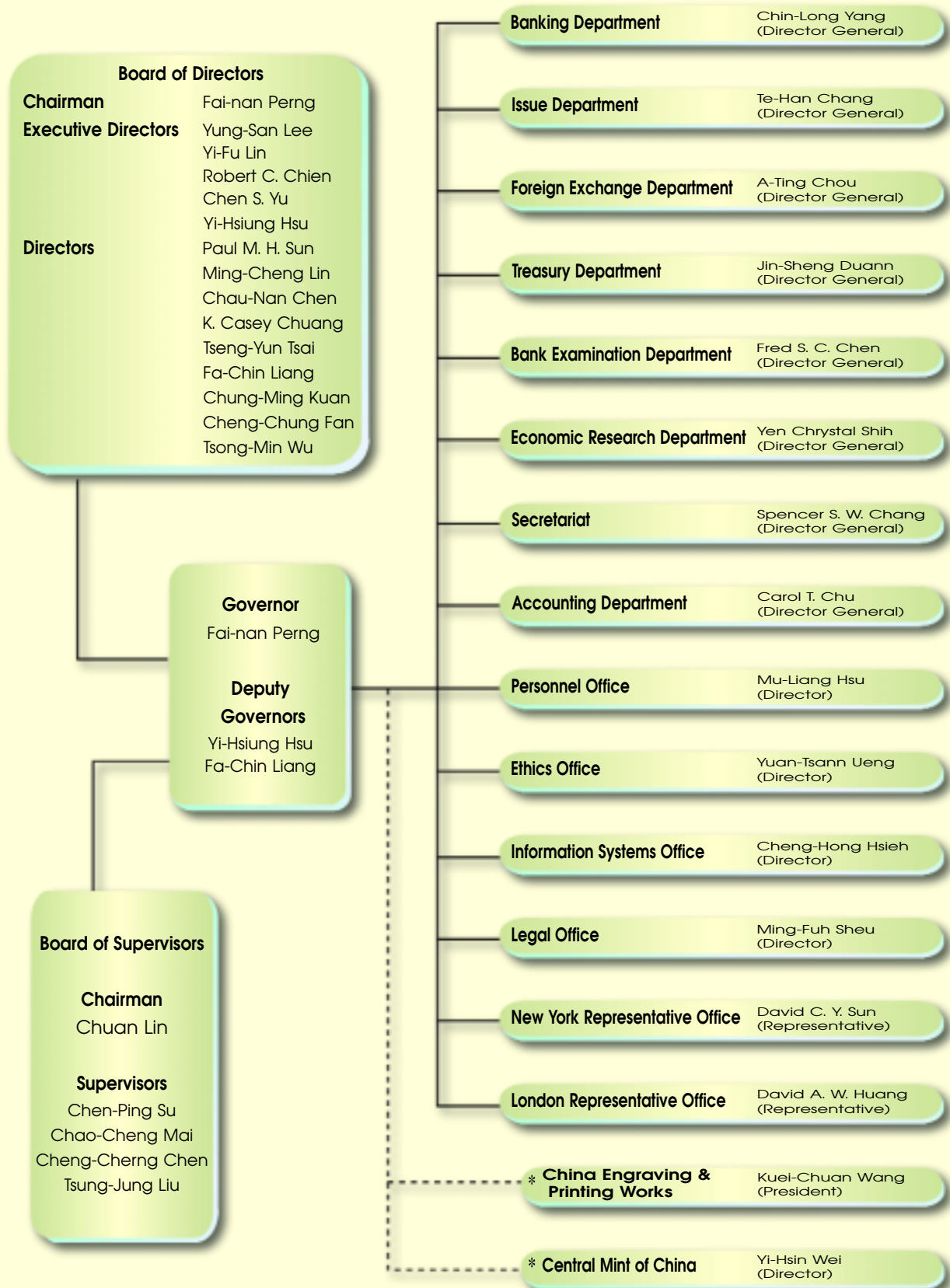


Organization and Management of the Central Bank of China



Note: * Affiliate of the Bank.

As of March, 2002



Chairman
Governor Fai-nan Perng



Executive
Director Yung-San Lee



Executive
Director Yi-Fu Lin



Executive
Director Robert C. Chien



Executive
Director Chen S. Yu



Executive Director
Deputy Governor Yi-Hsiung Hsu



Director Paul M. H. Sun



Director Ming-Cheng Lin



Director Chau-Nan Chen



Director K. Casey Chuang



Director Tseng-Yun Tsai



Director
Deputy Governor Fa-Chin Liang



Director Chung-Ming Kuan



Director Cheng-Chung Fan



Director Tsong-Min Wu



Chairman
Board of Supervisors Chuan Lin



Supervisor Chen-Ping Su



Supervisor Chao-Cheng Mai



Supervisor Cheng-Cheng Chen



Supervisor Tsung-Jung Liu