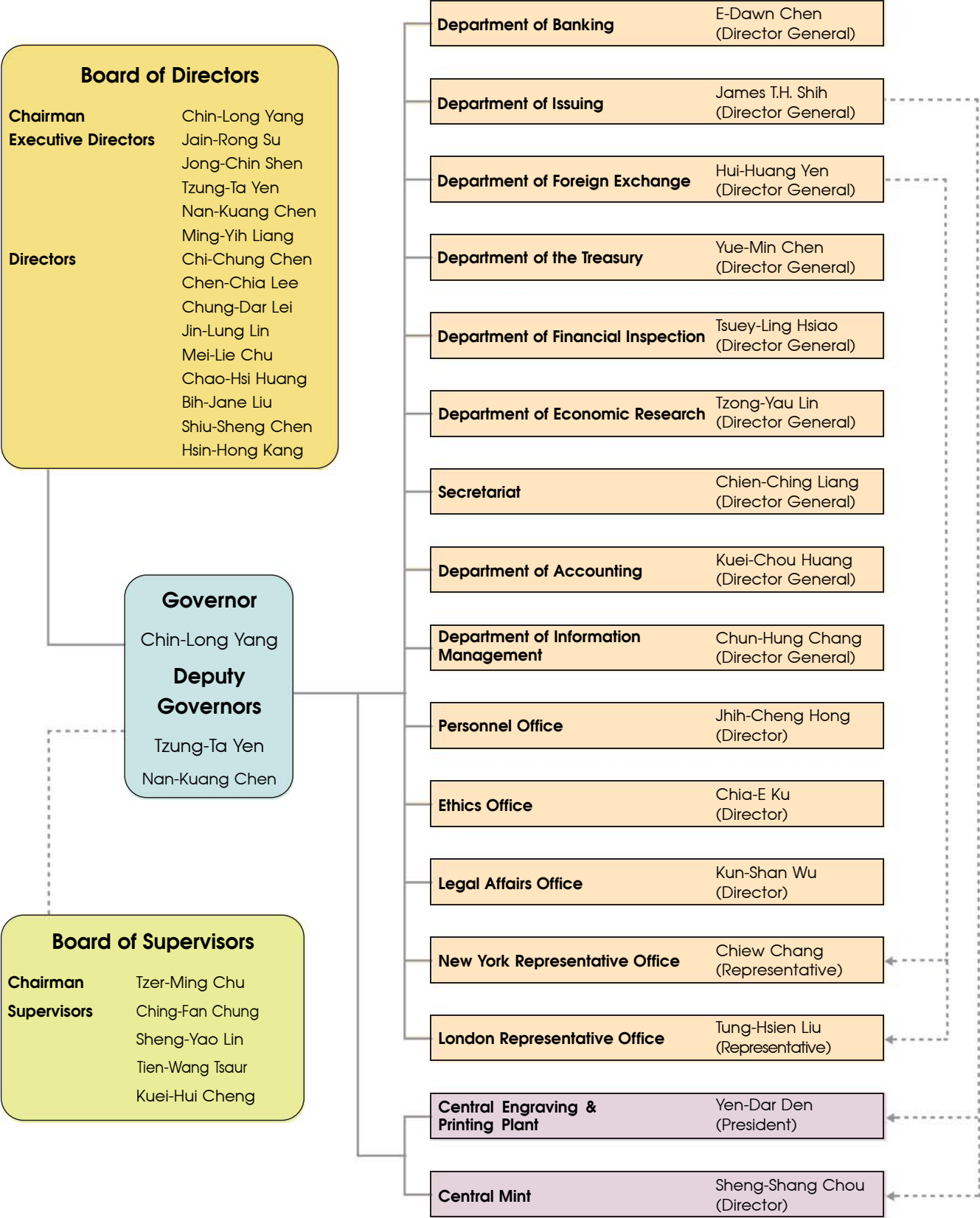


Organization and Management of the CBC



As of April 2019



Chairman
Board of Directors
Governor
Chin-Long Yang



Executive Director
Jain-Rong Su



Executive Director
Jong-Chin Shen



Executive Director
Deputy Governor
Tzung-Ta Yen



Executive Director
Deputy Governor
Nan-Kuang Chen



Executive Director
Ming-Yih Liang



Director
Chi-Chung Chen



Director
Chen-Chia Lee



Director
Chung-Dar Lei



Director
Jin-Lung Lin



Director
Mei-Lie Chu



Director
Chao-Hsi Huang



Director
Bih-Jane Liu



Director
Shiu-Sheng Chen



Director
Hsin-Hong Kang



Chairman
Board of Supervisors
Tzer-Ming Chu



Supervisor
Ching-Fan Chung



Supervisor
Sheng-Yao Lin



Supervisor
Tien-Wang Tsaur



Supervisor
Kuei-Hui Cheng