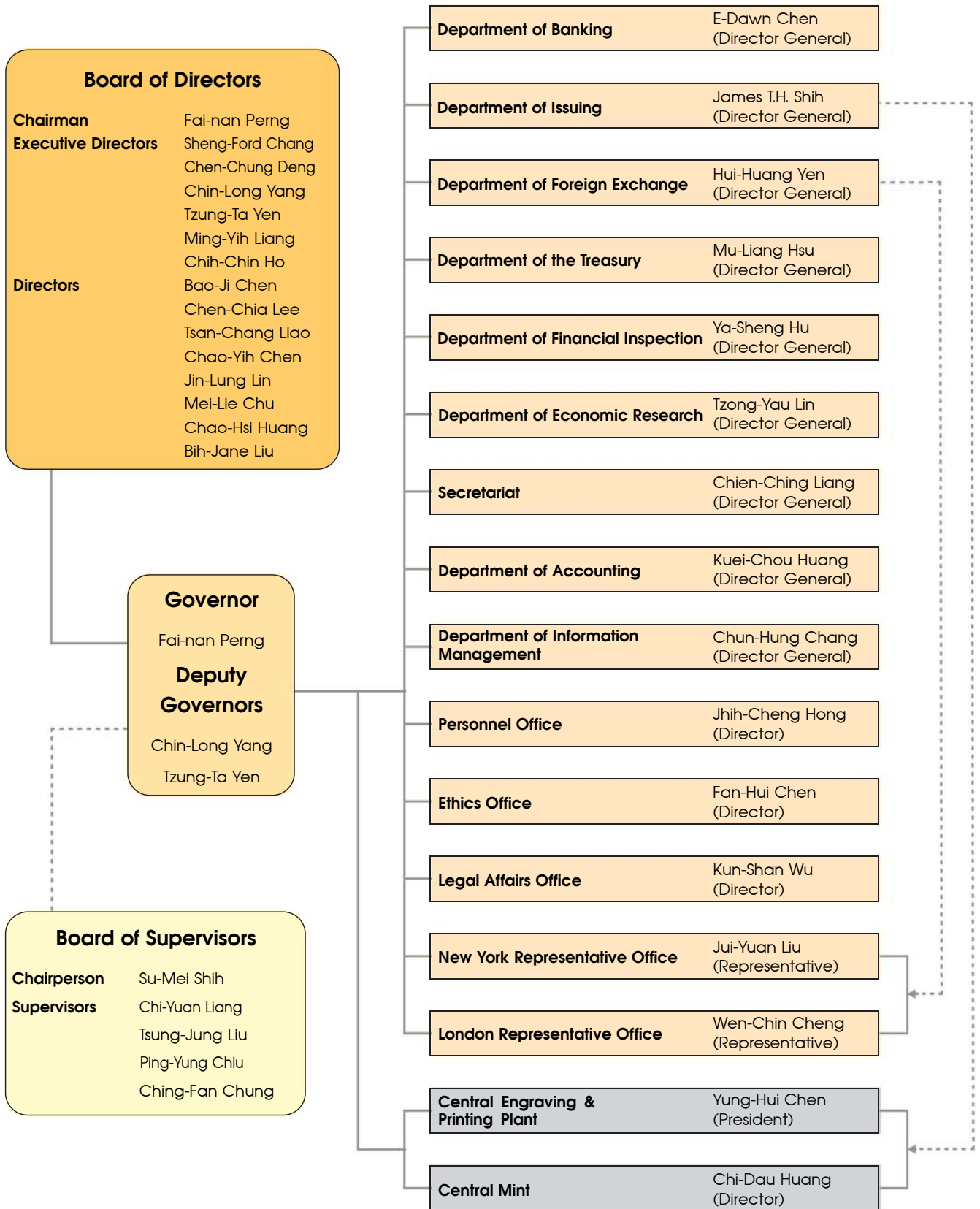


Organization and Management of the CBC



—— direct reporting - - - - supervision

As of March 2016



Chairman
Board of Directors
Governor
Fai-nan Perng



Executive Director
Sheng-Ford Chang



Executive Director
Chen-Chung Deng



Executive Director
Deputy Governor
Chin-Long Yang



Executive Director
Deputy Governor
Tzung-Ta Yen



Executive Director
Ming-Yih Liang



Executive Director
Chih-Chin Ho



Director
Bao-Ji Chen



Director
Chen-Chia Lee



Director
Tsan-Chang Liao



Director
Chao-Yih Chen



Director
Jin-Lung Lin



Director
Mei-Lie Chu



Director
Chao-Hsi Huang



Director
Bih-Jane Liu



Chairperson
Board of Supervisors
Su-Mei Shih



Supervisor
Chi-Yuan Liang



Supervisor
Tsung-Jung Liu



Supervisor
Ping-Yung Chiu



Supervisor
Ching-Fan Chung