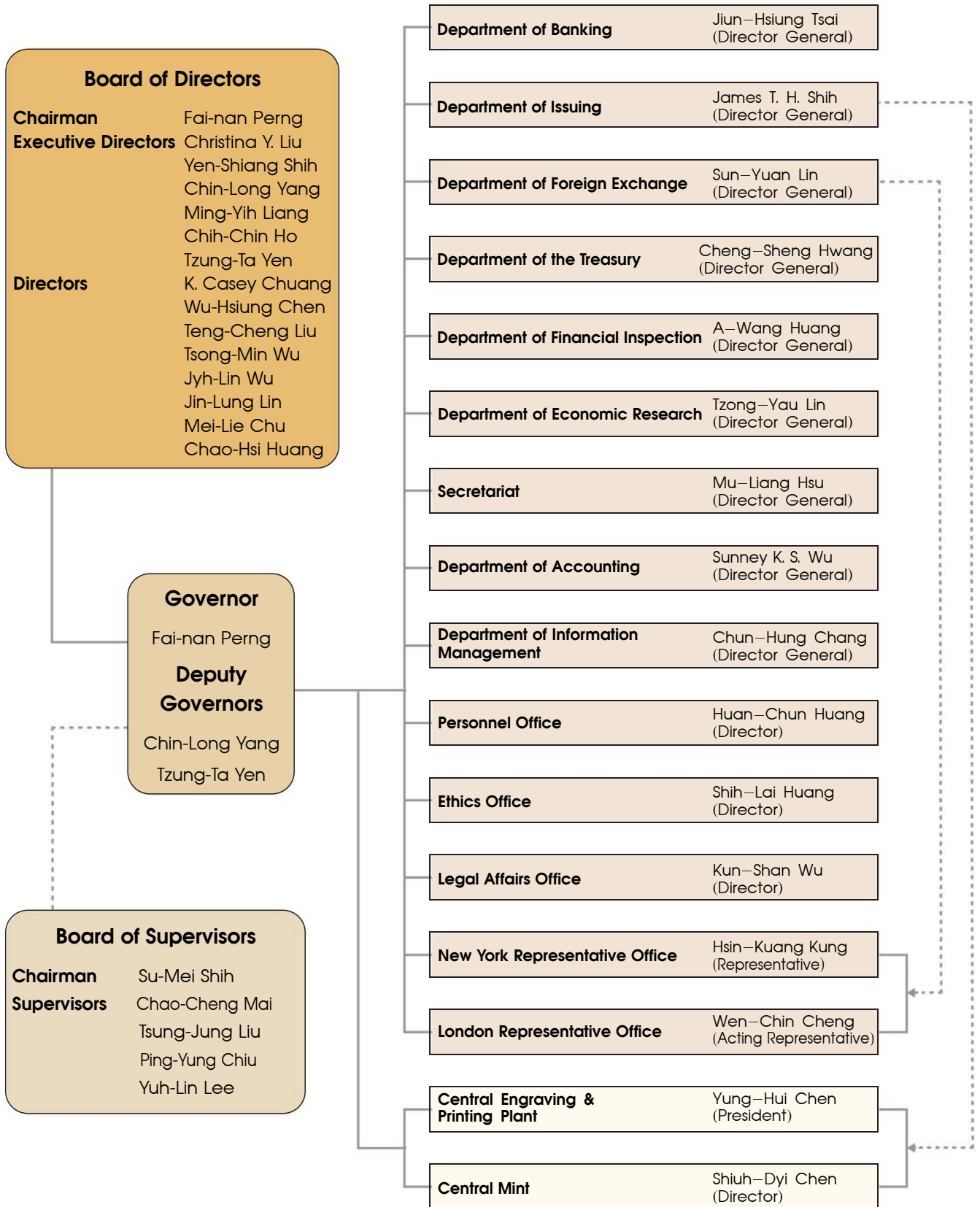


Organization and Management of the CBC



— under - - - - supervise

As of May 2012



Chairman
Board of Directors
Governor
Fai-nan Perng



Executive Director
Christina Y. Liu



Executive Director
Yen-Shiang Shih



Executive Director
Deputy Governor
Chin-Long Yang



Executive Director
Ming-Yih Liang



Executive Director
Chih-Chin Ho



Executive Director
Deputy Governor
Tzung-Ta Yen



Director
K. Casey Chuang



Director
Wu-Hsiung Chen



Director
Teng-Cheng Liu



Director
Tsong-Min Wu



Director
Jyh-Lin Wu



Director
Jin-Lung Lin



Director
Mei-Lie Chu



Director
Chao-Hsi Huang



Chairman
Board of Supervisors
Su-Mei Shih



Supervisor
Chao-Cheng Mai



Supervisor
Tsung-Jung Liu



Supervisor
Ping-Yung Chiu



Supervisor
Yuh-Lin Lee