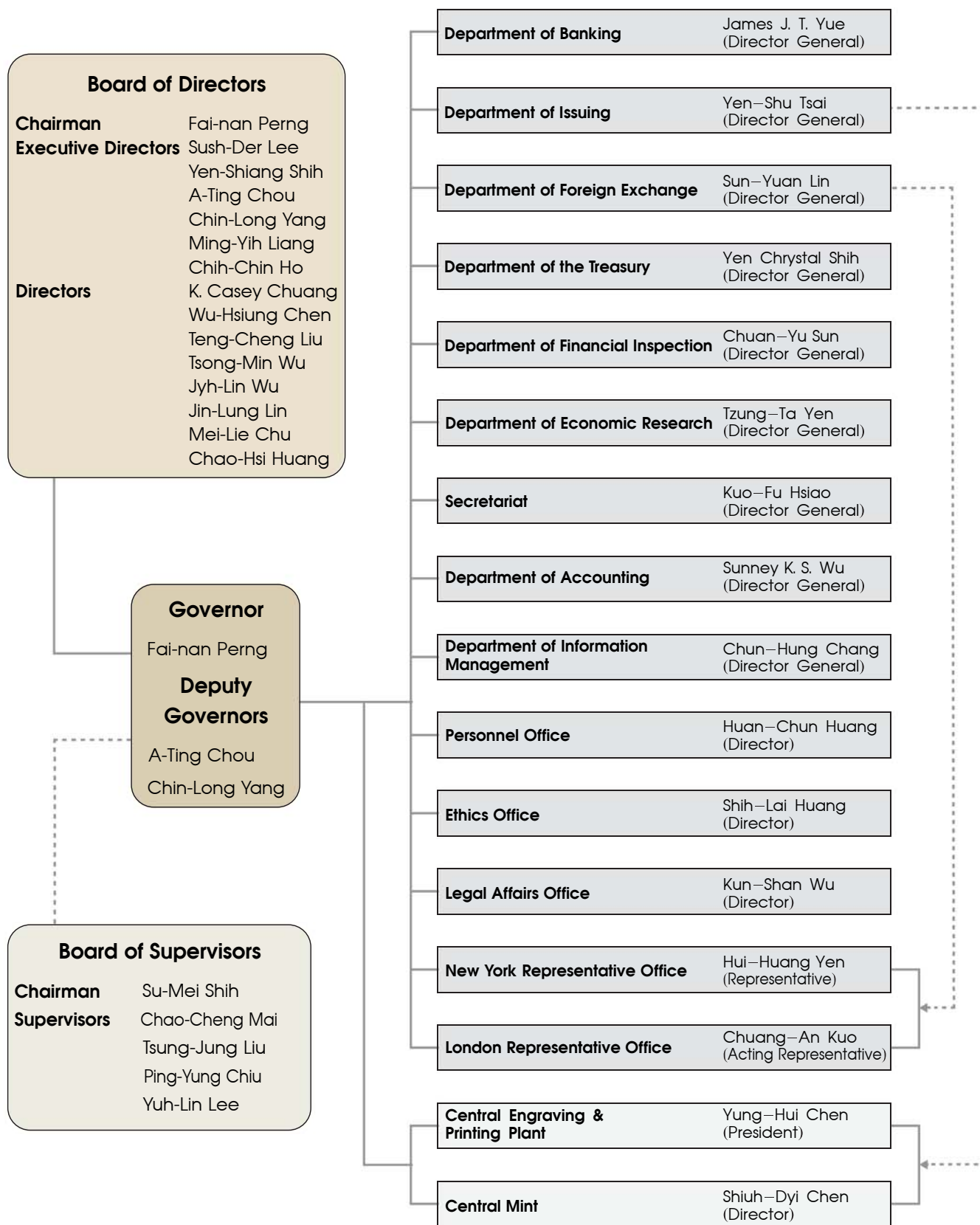


Organization and Management of the CBC



—— under

----- supervise

As of April 2010



Chairman
Board of Directors
Governor

Fai-nan Perng



Executive Director

Sush-Der Lee



Executive Director

Yen-Shiang Shih



Executive Director
Deputy Governor

A-Ting Chou



Executive Director
Deputy Governor

Chin-Long Yang



Executive Director

Ming-Yih Liang



Executive Director

Chih-Chin Ho



Director

K. Casey Chuang



Director

Wu-Hsiung Chen



Director

Teng-Cheng Liu



Director

Tsong-Min Wu



Director

Jyh-Lin Wu



Director

Jin-Lung Lin



Director

Mei-Lie Chu



Director

Chao-Hsi Huang



Chairman
Board of Supervisors

Su-Mei Shih



Supervisor

Chao-Cheng Mai



Supervisor

Tsung-Jung Liu



Supervisor

Ping-Yung Chiu



Supervisor

Yuh-Lin Lee

