

SUMMARY STATISTICS

NOV. 2019

1. Coverage of Statistics:

All foreign exchange export proceeds and import payments through banks.

2. Comparison with Nov. 2018 of export proceeds and import payments:

Export proceeds totaled US\$ 23,668.5 million, a decrease of US\$ 2,934.2 million or 11.0% (Table 1), as compared with Nov. 2018.

Import payments totaled US\$ 18,733.1 million, a decrease of US\$ 2,491.7 million or 11.7% (Table 1), as compared with Nov. 2018.

3. Comparison with Nov. 2018 of export proceeds realized:

Sold for N.T. Dollars US\$ 1,200.1 million, a decrease of US\$ 237.0 million or 16.5% (Table 2), as compared with Nov. 2018.

Retained with exporters US\$ 22,468.4 million, a decrease of US\$ 2,697.2 million or 10.7% (Table 2), as compared with Nov. 2018.

4. Comparison with Nov. 2018 of import payments made:

Purchased with N.T. Dollars US\$ 3,599.7 million, a decrease of US\$ 493.8 million or 12.1% (Table 3), as compared with Nov. 2018.

Self-acquired foreign exchange imports US\$ 15,133.4 million, a decrease of US\$ 1,997.9 million or 11.7% (Table 3), as compared with Nov. 2018.

5. Foreign exchange exports and imports by type of payment (Table 4):

(1) Exports:

Sight L/C US\$ 1,162.5 million, 4.9% of total exports.

Usance L/C US\$ 432.2 million, 1.8% of total exports.

Collection US\$ 200.6 million, 0.8% of total exports.

Remittance US\$ 21,873.2 million, 92.5% of total exports.

(2) Imports:

Sight L/C US\$ 178.8 million, 1.0% of total imports.

Usance L/C US\$ 1,619.6 million, 8.6% of total imports.

Collection US\$ 134.6 million, 0.7% of total imports.

Remittance US\$ 16,800.1 million, 89.7% of total imports.

**Foreign Exchange Export Proceeds and Import Payments by Type of Payment
(Current Month)**

Table 4

Unit: US\$ Million

Type of Payment	Item	Foreign Exchange Export Proceeds				Foreign Exchange Import Payments			
		Nov. 2019		Comparison with Nov. 2018		Nov. 2019		Comparison with Nov. 2018	
		Amount	%	Amount	%	Amount	%	Amount	%
	Sight L/C	1,162.5	4.9	-525.7	-31.1	178.8	1.0	-78.6	-30.5
	Usance L/C	432.2	1.8	-162.0	-27.3	1,619.6	8.6	-628.2	-27.9
	Collection	200.6	0.8	-43.8	-17.9	134.6	0.7	-43.5	-24.4
	Remittance	21,873.2	92.5	-2,202.7	-9.1	16,800.1	89.7	-1,741.4	-9.4
	Total	23,668.5	100.0	-2,934.2	-11.0	18,733.1	100.0	-2,491.7	-11.7

**Foreign Exchange Export Proceeds and Import Payments by Type of Payment
(Jan. To Date)**

Table 5

Unit: US\$ Million

Type of Payment	Item	Foreign Exchange Export Proceeds				Foreign Exchange Import Payments			
		Jan.-Nov. 2019		Comparison with Jan.-Nov. 2018		Jan.-Nov. 2019		Comparison with Jan.-Nov. 2018	
		Amount	%	Amount	%	Amount	%	Amount	%
Sight L/C		14,997.3	5.7	-4,217.6	-21.9	2,400.4	1.1	-287.5	-10.7
Usance L/C		5,295.0	2.0	-1,132.3	-17.6	20,601.6	9.9	-1,413.0	-6.4
Collection		2,669.3	1.0	-194.4	-6.8	1,844.1	0.9	-175.2	-8.7
Remittance		237,946.4	91.3	-10,993.9	-4.4	184,035.6	88.1	-8,062.1	-4.2
Total		260,908.0	100.0	-16,538.2	-6.0	208,881.7	100.0	-9,937.8	-4.5

CHART 1 COMPARISON OF FOREIGN EXCHANGE EXPORT PROCEEDS AND IMPORT PAYMENTS (2017-2019)

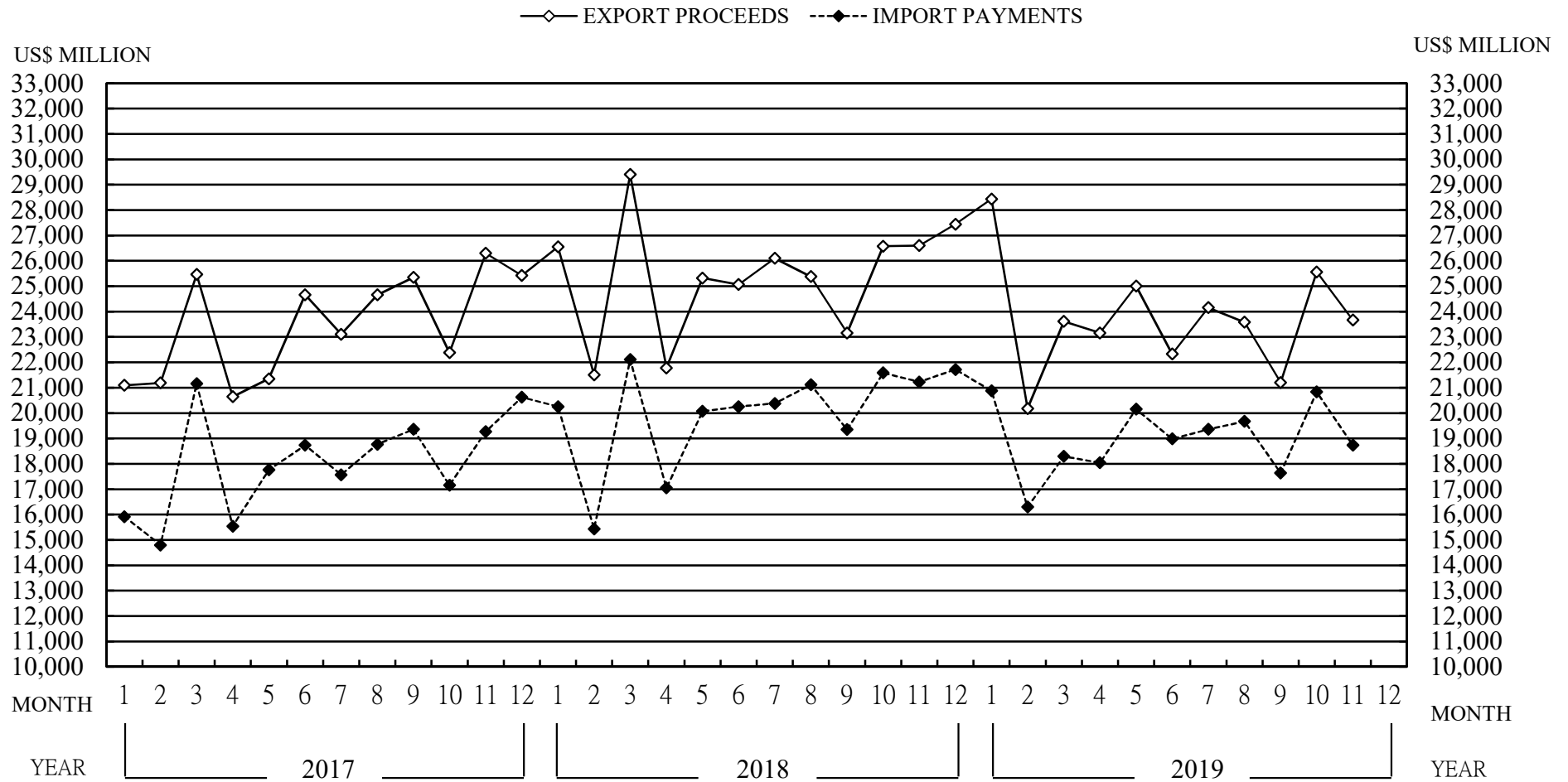
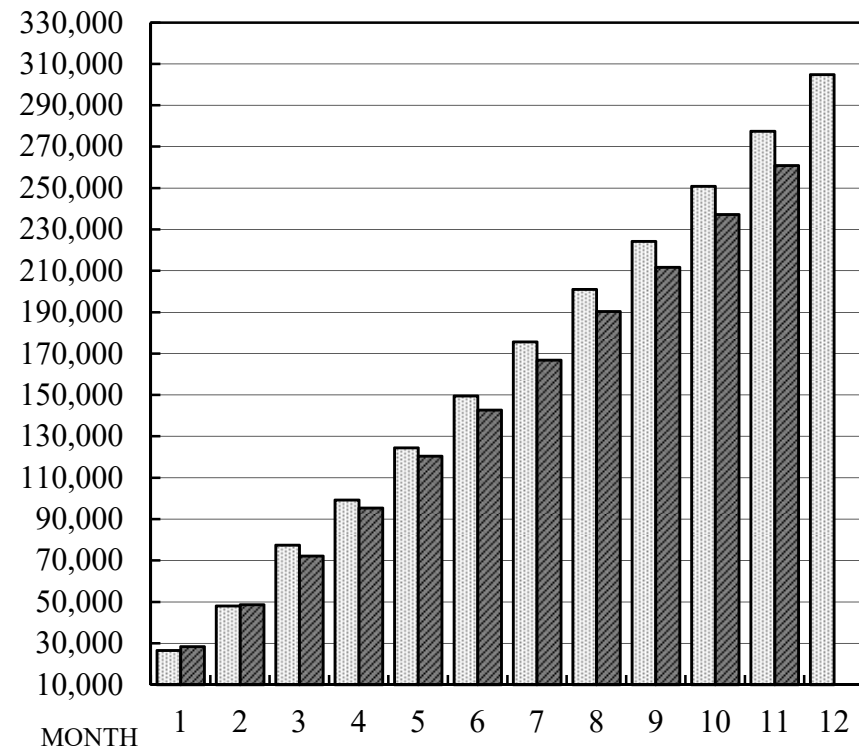


CHART 2 MONTHLY CUMULATIVE OF FOREIGN EXCHANGE EXPORT PROCEEDS AND IMPORT PAYMENTS

(1) EXPORT PROCEEDS

■ 2018 ■ 2019

US\$ MILLION



(2) IMPORT PAYMENTS

■ 2018 ■ 2019

US\$ MILLION

