

SUMMARY STATISTICS

SEP. 2008

1. Coverage of Statistics:

All foreign exchange export proceeds and import payments through banks.

2. Comparison with Sep. 2007 of export proceeds and import payments:

Export proceeds totaled US\$ 22,900.3 million, an increase of US\$ 1,639.4 million or 7.7% (Table 1), as compared with Sep. 2007.

Import payments totaled US\$ 23,128.3 million, an increase of US\$ 3,285.0 million or 16.6% (Table 1), as compared with Sep. 2007.

3. Comparison with Sep. 2007 of export proceeds realized:

Sold for N.T. Dollars US\$ 2,079.8 million, a decrease of US\$ 59.7 million or 2.8% (Table 2), as compared with Sep. 2007.

Retained with exporters US\$ 20,820.5 million, an increase of US\$ 1,699.1 million or 8.9% (Table 2), as compared with Sep. 2007.

4. Comparison with Sep. 2007 of import payments made:

Purchased with N.T. Dollars US\$ 4,689.8 million, an increase of US\$ 653.8 million or 16.2% (Table 3), as compared with Sep. 2007.

Self-acquired foreign exchange imports US\$ 18,438.5 million, an increase of US\$ 2,631.2 million or 16.6% (Table 3), as compared with Sep. 2007.

5. Foreign exchange exports and imports by type of payment (Table 4):

(1) Exports:

Sight L/C	US\$	1,668.0	million,	7.3%	of total exports.
Usance L/C	US\$	1,068.8	million,	4.7%	of total exports.
Collection	US\$	415.5	million,	1.8%	of total exports.
Remittance	US\$	19,748.0	million,	86.2%	of total exports.

(2) Imports:

Sight L/C	US\$	807.9	million,	3.5%	of total imports.
Usance L/C	US\$	3,917.2	million,	16.9%	of total imports.
Collection	US\$	319.0	million,	1.4%	of total imports.
Remittance	US\$	18,084.2	million,	78.2%	of total imports.

**Foreign Exchange Export Proceeds and Import Payments by Type of Payment
(Current Month)**

Table 4

Unit: US\$ Million

Type of Payment	Item	Foreign Exchange Export Proceeds				Foreign Exchange Import Payments			
		Sep. 2008		Comparison with Sep. 2007		Sep. 2008		Comparison with Sep. 2007	
		Amount	%	Amount	%	Amount	%	Amount	%
Sight L/C		1,668.0	7.3	-86.3	-4.9	807.9	3.5	238.6	41.9
Usance L/C		1,068.8	4.7	34.8	3.4	3,917.2	16.9	303.6	8.4
Collection		415.5	1.8	20.5	5.2	319.0	1.4	56.6	21.6
Remittance		19,748.0	86.2	1,670.4	9.2	18,084.2	78.2	2,686.2	17.4
Total		22,900.3	100.0	1,639.4	7.7	23,128.3	100.0	3,285.0	16.6

**Foreign Exchange Export Proceeds and Import Payments by Type of Payment
(Jan. To Date)**

Table 5

Unit: US\$ Million

Type of Payment	Item	Foreign Exchange Export Proceeds				Foreign Exchange Import Payments			
		Jan.-Sep. 2008		Comparison with Jan.-Sep. 2007		Jan.-Sep. 2008		Comparison with Jan.-Sep. 2007	
		Amount	%	Amount	%	Amount	%	Amount	%
Sight L/C		17,372.0	8.2	848.7	5.1	5,765.9	2.8	844.7	17.2
Usance L/C		11,022.8	5.2	2,058.7	23.0	35,089.2	16.8	2,366.3	7.2
Collection		3,666.0	1.7	331.1	9.9	2,844.7	1.4	142.9	5.3
Remittance		178,684.5	84.9	24,631.2	16.0	165,367.5	79.0	37,366.9	29.2
Total		210,745.3	100.0	27,869.7	15.2	209,067.3	100.0	40,720.8	24.2

CHART 1 COMPARISON OF FOREIGN EXCHANGE EXPORT PROCEEDS AND IMPORT PAYMENTS (2006-2008)

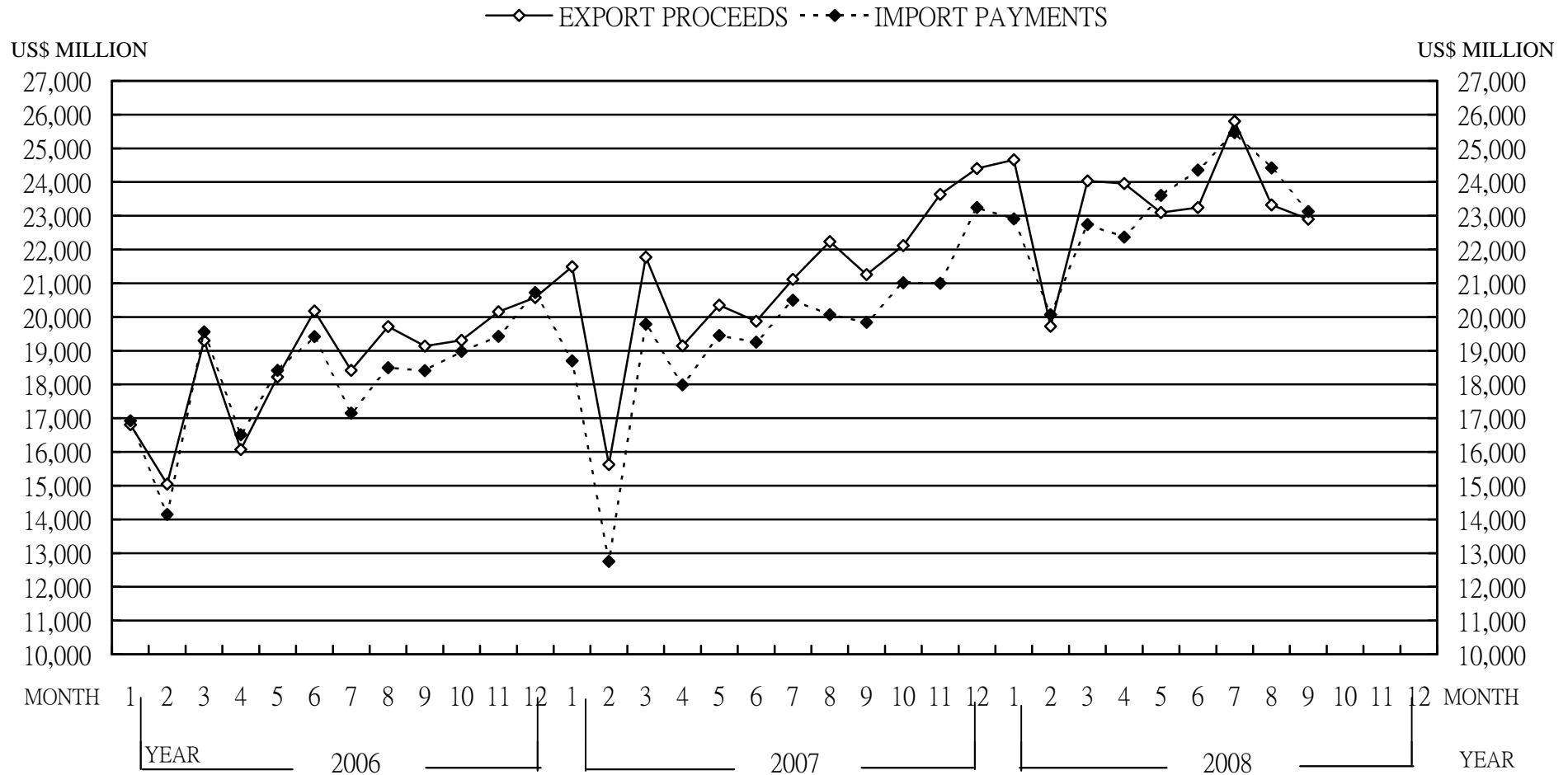
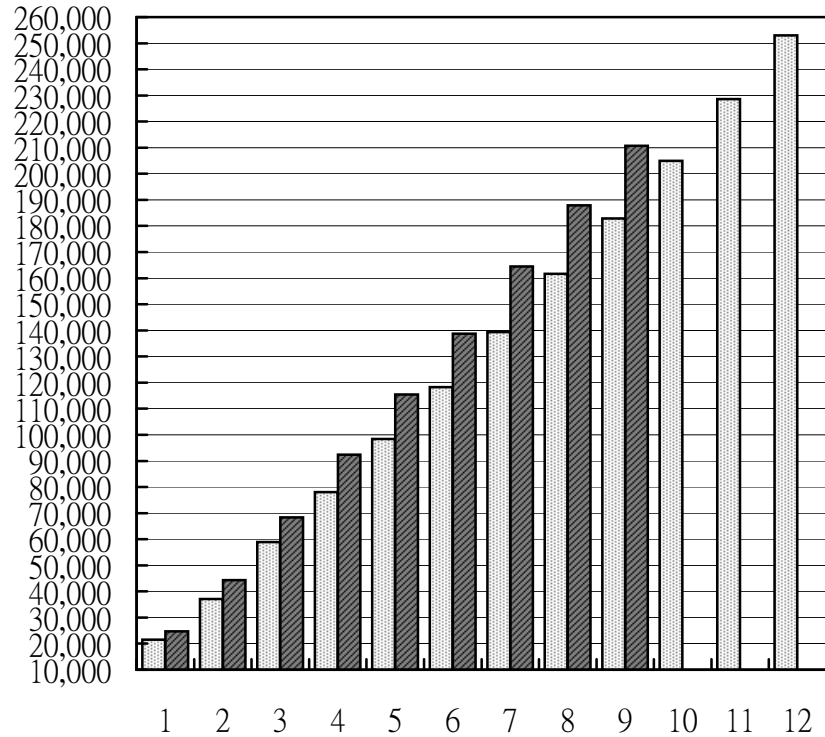


CHART 2 MONTHLY CUMULATIVE OF FOREIGN EXCHANGE EXPORT PROCEEDS AND IMPORT PAYMENTS

(1) EXPORT PROCEEDS

■ 2007 ■ 2008

US\$ MILLION



(2) IMPORT PAYMENTS

■ 2007 ■ 2008

US\$ MILLION

