

SUMMARY STATISTICS

OCT. 2007

1. Coverage of Statistics:

All foreign exchange export proceeds and import payments through banks.

2. Comparison with Oct. 2006 of export proceeds and import payments:

Export proceeds totaled US\$ 22,320.6 million, an increase of US\$ 3,013.1 million or 15.6% (Table 1), as compared with Oct. 2006.

Import payments totaled US\$ 21,017.1 million, an increase of US\$ 2,038.8 million or 10.7% (Table 1), as compared with Oct. 2006.

3. Comparison with Oct. 2006 of export proceeds realized:

Sold for N.T. Dollars US\$ 2,177.8 million, a decrease of US\$ 71.2 million or 3.2% (Table 2), as compared with Oct. 2006.

Retained with exporters US\$ 20,142.8 million, an increase of US\$ 3,084.3 million or 18.1% (Table 2), as compared with Oct. 2006.

4. Comparison with Oct. 2006 of import payments made:

Purchased with N.T. Dollars: US\$ 4,336.1 million, an increase of US\$ 52.5 million or 1.2% (Table 3), as compared with Oct. 2006.

Self-acquired foreign exchange imports US\$ 16,681.0 million, an increase of US\$ 1,986.3 million or 13.5% (Table 3), as compared with Oct. 2006.

5. Foreign exchange exports and imports by type of payment (Table 4):

(1) Exports:

Sight L/C US\$ 1,981.7 million, 8.9% of total exports.

Usance L/C US\$ 1,156.7 million, 5.2% of total exports.

Collection US\$ 377.5 million, 1.7% of total exports.

Remittance US\$ 18,804.7 million, 84.2% of total exports.

(2) Imports:

Sight L/C US\$ 673.2 million, 3.2% of total imports.

Usance L/C US\$ 3,912.8 million, 18.6% of total imports.

Collection US\$ 316.7 million, 1.5% of total imports.

Remittance US\$ 16,114.4 million, 76.7% of total imports.

**Foreign Exchange Export Proceeds and Import Payments by Type of Payment
(Current Month)**

Table 4

Unit: US\$ Million

Type of Payment	Item	Foreign Exchange Export Proceeds				Foreign Exchange Import Payments			
		Oct. 2007		Comparison with Oct. 2006		Oct. 2007		Comparison with Oct. 2006	
		Amount	%	Amount	%	Amount	%	Amount	%
Sight L/C		1,981.7	8.9	327.0	19.8	673.2	3.2	205.5	43.9
Usance L/C		1,156.7	5.2	212.0	22.4	3,912.8	18.6	530.3	15.7
Collection		377.5	1.7	-3.8	-1.0	316.7	1.5	-100.9	-24.2
Remittance		18,804.7	84.2	2,477.9	15.2	16,114.4	76.7	1,403.9	9.5
Total		22,320.6	100.0	3,013.1	15.6	21,017.1	100.0	2,038.8	10.7

**Foreign Exchange Export Proceeds and Import Payments by Type of Payment
(Jan. To Date)**

Table 5

Unit: US\$ Million

Type of Payment	Item	Foreign Exchange Export Proceeds				Foreign Exchange Import Payments			
		Jan.-Oct. 2007		Comparison with Jan.-Oct. 2006		Jan.-Oct. 2007		Comparison with Jan.-Oct. 2006	
		Amount	%	Amount	%	Amount	%	Amount	%
Sight L/C		18,505.1	9.0	1,077.9	6.2	5,594.5	3.0	1,200.6	27.3
Usance L/C		10,120.9	4.9	1,013.0	11.1	36,635.7	19.3	1,319.2	3.7
Collection		3,712.5	1.8	90.4	2.5	3,018.5	1.6	236.3	8.5
Remittance		172,791.6	84.3	20,754.0	13.7	144,123.7	76.1	8,605.1	6.3
Total		205,130.1	100.0	22,935.3	12.6	189,372.4	100.0	11,361.2	6.4

CHART 1 COMPARISON OF FOREIGN EXCHANGE EXPORT PROCEEDS AND IMPORT PAYMENTS (2005-2007)

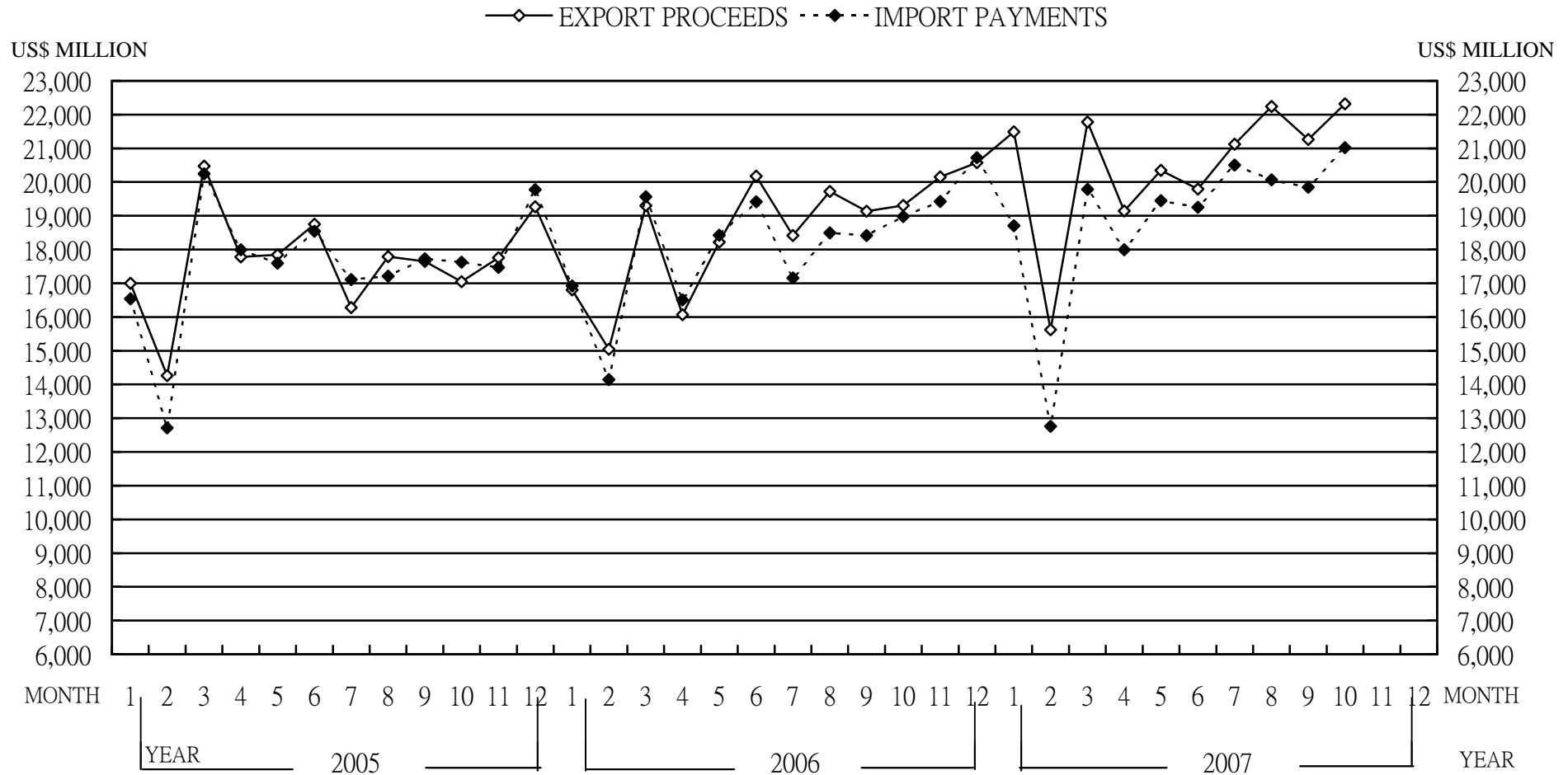
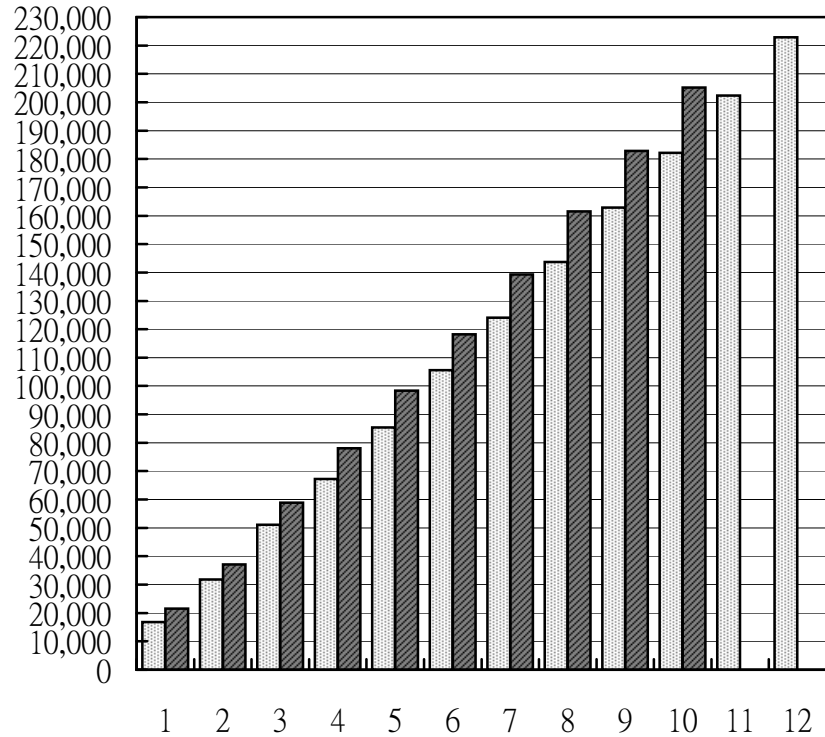


CHART 2 MONTHLY CUMULATIVE OF FOREIGN EXCHANGE EXPORT PROCEEDS AND IMPORT PAYMENTS

(1) EXPORT PROCEEDS

■ 2006 ■ 2007

US\$ MILLION



(2) IMPORT PAYMENTS

■ 2006 ■ 2007

US\$ MILLION

