

SUMMARY STATISTICS

NOV. 2004

1. Coverage of Statistics:

All foreign exchange export proceeds and import payments through banks.

2. Comparison with Nov. 2003 of export proceeds and import payments:

Export proceeds totaled US\$ 18,612.1 million, an increase of US\$ 4,559.4 million or 32.4% (Table 1), as compared with Nov. 2003.

Import payments totaled US\$ 19,185.6 million, an increase of US\$ 7,325.0 million or 61.8% (Table 1), as compared with Nov. 2003.

3. Comparison with Nov. 2003 of export proceeds realized:

Sold for N.T. Dollars US\$ 2,354.1 million, an increase of US\$ 391.5 million or 19.9% (Table 2), as compared with Nov. 2003.

Retained with exporters US\$ 16,258.0 million, an increase of US\$ 4,167.9 million or 34.5% (Table 2), as compared with Nov. 2003.

4. Comparison with Nov. 2003 of import payments made:

Purchased with N.T. Dollars: US\$ 4,709.7 million, an increase of US\$ 1,616.4 million or 52.3% (Table 3), as compared with Nov. 2003.

Self-acquired foreign exchange imports US\$ 14,475.9 million, an increase of US\$ 5,708.6 million or 65.1% (Table 3), as compared with Nov. 2003.

5. Foreign exchange exports and imports by type of payment (Table 4):

(1) Exports:

Sight L/C US\$ 1,722.0 million, 9.3% of total exports.

Usance L/C US\$ 785.9 million, 4.2% of total exports.

Collection US\$ 358.3 million, 1.9% of total exports.

Remittance US\$ 15,745.9 million, 84.6% of total exports.

(2) Imports:

Sight L/C US\$ 427.6 million, 2.2% of total imports.

Usance L/C US\$ 4,212.8 million, 22.0% of total imports.

Collection US\$ 337.6 million, 1.8% of total imports.

Remittance US\$ 14,207.6 million, 74.0% of total imports.

Comparison of Foreign Exchange Export Proceeds and Import Payments

Table 1

Unit: US\$ Million

| Item Month | Year 2004 | | | Year 2003 | | | Comparison with the Same Period | | | |
|---|--|--|-------------------------|--|--|-------------------------|-------------------------------------|------|-------------------------------------|------|
| | Foreign Exchange Export Proceeds (1) | Foreign Exchange Import Payments (2) | Balances (1)-(2) | Foreign Exchange Export Proceeds (3) | Foreign Exchange Import Payments (4) | Balances (3)-(4) | Last Year | | | |
| | | | | | | | Foreign exchange Export Proceeds | | Foreign exchange Import Payments | |
| | | | | | | | Amount | % | Amount | % |
| 2004 01-11 | 182,821.9 | 172,806.4 | 10,015.5 | 145,489.5 | 128,591.5 | 16,898.0 | 37,332.4 | 25.7 | 44,214.9 | 34.4 |
| 2004 01 | 14,958.4 | 11,776.7 | 3,181.7 | 13,291.5 | 11,589.9 | 1,701.6 | 1,666.9 | 12.5 | 186.8 | 1.6 |
| 2004 02 | 15,215.5 | 13,740.1 | 1,475.4 | 10,579.9 | 9,510.2 | 1,069.7 | 4,635.6 | 43.8 | 4,229.9 | 44.5 |
| 2004 03 | (R) 16,867.9 | (R) 16,499.3 | (R) 368.6 | 13,400.8 | 12,043.7 | 1,357.1 | 3,467.1 | 25.9 | 4,455.6 | 37.0 |
| 2004 04 | 16,316.7 | 14,811.4 | 1,505.3 | 12,680.0 | 11,472.8 | 1,207.2 | 3,636.7 | 28.7 | 3,338.6 | 29.1 |
| 2004 05 | 16,053.5 | (R) 14,655.1 | (R) 1,398.4 | 12,570.0 | 11,772.6 | 797.4 | 3,483.5 | 27.7 | 2,882.5 | 24.5 |
| 2004 06 | (R) 16,384.6 | 15,794.9 | (R) 589.7 | 13,098.5 | 12,084.7 | 1,013.8 | 3,286.1 | 25.1 | 3,710.2 | 30.7 |
| 2004 07 | (R) 16,871.9 | (R) 16,065.8 | (R) 806.1 | 13,896.4 | 11,872.2 | 2,024.2 | 2,975.5 | 21.4 | 4,193.6 | 35.3 |
| 2004 08 | (R) 16,817.1 | (R) 16,185.6 | (R) 631.5 | 12,817.1 | 11,082.4 | 1,734.7 | 4,000.0 | 31.2 | 5,103.2 | 46.0 |
| 2004 09 | (R) 17,626.0 | (R) 16,989.4 | (R) 636.6 | 14,000.9 | 12,351.8 | 1,649.1 | 3,625.1 | 25.9 | 4,637.6 | 37.5 |
| 2004 10 | (R) 17,098.2 | (R) 17,102.5 | (R) -4.3 | 15,101.7 | 12,950.6 | 2,151.1 | 1,996.5 | 13.2 | 4,151.9 | 32.1 |
| 2004 11 | 18,612.1 | 19,185.6 | -573.5 | 14,052.7 | 11,860.6 | 2,192.1 | 4,559.4 | 32.4 | 7,325.0 | 61.8 |

Note : (R) Revised

Composition of Foreign Exchange Export Proceeds

Table 2

Unit: US\$ Million

| Item Month | Foreign Exchange Export Proceeds | | | Comparison with the Same Period Last Year | | | |
|-------------------|----------------------------------|-----------------------------|-------------------------------|--|-------|----------------------------|------|
| | Total | Sold for N.T. Dollars | Retained with Exporters | Sold for N.T. Dollars | | Retained with Exporters | |
| | (1)=(2)+(3) | (2) | (3) | Amount | % | Amount | % |
| 2004 01-11 | 182,821.9 | 24,750.6 | 158,071.3 | 2,610.2 | 11.8 | 34,722.2 | 28.1 |
| 2004 01 | 14,958.4 | 2,101.6 | 12,856.8 | -66.7 | -3.1 | 1,733.6 | 15.6 |
| 2004 02 | 15,215.5 | 2,133.2 | 13,082.3 | 588.2 | 38.1 | 4,047.4 | 44.8 |
| 2004 03 | (R) 16,867.9 | 2,322.1 | (R) 14,545.8 | 289.3 | 14.2 | 3,177.8 | 28.0 |
| 2004 04 | 16,316.7 | 2,271.2 | 14,045.5 | 250.0 | 12.4 | 3,386.7 | 31.8 |
| 2004 05 | 16,053.5 | 2,254.9 | 13,798.6 | 309.4 | 15.9 | 3,174.1 | 29.9 |
| 2004 06 | (R) 16,384.6 | 2,344.1 | (R) 14,040.5 | 459.1 | 24.4 | 2,827.0 | 25.2 |
| 2004 07 | (R) 16,871.9 | 2,348.0 | (R) 14,523.9 | 217.3 | 10.2 | 2,758.2 | 23.4 |
| 2004 08 | (R) 16,817.1 | 2,236.8 | (R) 14,580.3 | 329.1 | 17.3 | 3,670.9 | 33.6 |
| 2004 09 | (R) 17,626.0 | 2,238.5 | (R) 15,387.5 | 90.6 | 4.2 | 3,534.5 | 29.8 |
| 2004 10 | (R) 17,098.2 | (R) 2,146.1 | (R) 14,952.1 | -247.6 | -10.3 | 2,244.1 | 17.7 |
| 2004 11 | 18,612.1 | 2,354.1 | 16,258.0 | 391.5 | 19.9 | 4,167.9 | 34.5 |

Note : * The export proceeds may be used to repay foreign currency loans or placed in the foreign currency deposits of domestic banks, etc..
 And later on the deposits may be sold for N.T. Dollars, used to pay for importation of goods, or outwardly remitted whenever needed.
 The deposits which have been sold for N.T. Dollars shall no longer be included in the figure of column (2) of this table.

Composition of Foreign Exchange Import Payments

Table 3 Unit: US\$ Million

| Item Month | Foreign Exchange Import Payments | | | Comparison with the Same Period Last Year | | | |
|--|----------------------------------|-----------------------------------|---------------------------------|--|------|-----------------------------|------|
| | Total | Purchased with N.T. Dollars | Non- Purchased from Banks | Purchased with N.T. Dollars | | Non-Purchased from Banks | |
| | (1)=(2)+(3) | (2) | (3) | Amount | % | Amount | % |
| 2004 01-11 | 172,806.4 | 42,890.8 | 129,915.6 | 7,933.6 | 22.7 | 36,281.3 | 38.7 |
| 2004 01 | 11,776.7 | 3,125.1 | 8,651.6 | -158.5 | -4.8 | 345.3 | 4.2 |
| 2004 02 | 13,740.1 | 3,415.9 | 10,324.2 | 879.9 | 34.7 | 3,350.0 | 48.0 |
| 2004 03 | (R) 16,499.3 | 4,152.3 | (R) 12,347.0 | 627.3 | 17.8 | 3,828.3 | 44.9 |
| 2004 04 | 14,811.4 | 3,619.2 | 11,192.2 | 400.1 | 12.4 | 2,938.5 | 35.6 |
| 2004 05 | (R) 14,655.1 | 3,524.4 | (R) 11,130.7 | 147.4 | 4.4 | 2,735.1 | 32.6 |
| 2004 06 | 15,794.9 | 3,911.8 | 11,883.1 | 502.5 | 14.7 | 3,207.7 | 37.0 |
| 2004 07 | (R) 16,065.8 | 3,936.4 | (R) 12,129.4 | 507.6 | 14.8 | 3,686.0 | 43.7 |
| 2004 08 | (R) 16,185.6 | (R) 4,008.2 | 12,177.4 | 1,101.2 | 37.9 | 4,002.0 | 49.0 |
| 2004 09 | (R) 16,989.4 | (R) 4,321.0 | (R) 12,668.4 | 1,272.2 | 41.7 | 3,365.4 | 36.2 |
| 2004 10 | (R) 17,102.5 | 4,166.8 | (R) 12,935.7 | 1,037.5 | 33.2 | 3,114.4 | 31.7 |
| 2004 11 | 19,185.6 | 4,709.7 | 14,475.9 | 1,616.4 | 52.3 | 5,708.6 | 65.1 |

Note : * The importers withdraw their foreign currency deposits from banks for import payments, etc.

**Foreign Exchange Export Proceeds and Import Payments by Type of Payment
(Current Month)**

Table 4

Unit: US\$ Million

| Type of Payment | Item | Foreign Exchange Export Proceeds | | | | Foreign Exchange Import Payments | | | |
|--------------------|------|----------------------------------|--------------|-------------------------------------|-------------|----------------------------------|--------------|-------------------------------------|-------------|
| | | Nov. 2004 | | Comparison with Nov. 2003 | | Nov. 2004 | | Comparison with Nov. 2003 | |
| | | Amount | % | Amount | % | Amount | % | Amount | % |
| Sight L/C | | 1,722.0 | 9.3 | 358.7 | 26.3 | 427.6 | 2.2 | 139.9 | 48.6 |
| Usance L/C | | 785.9 | 4.2 | 236.4 | 43.0 | 4,212.8 | 22.0 | 1,783.4 | 73.4 |
| Collection | | 358.3 | 1.9 | 30.8 | 9.4 | 337.6 | 1.8 | 80.9 | 31.5 |
| Remittance | | 15,745.9 | 84.6 | 3,933.5 | 33.3 | 14,207.6 | 74.0 | 5,320.8 | 59.9 |
| Total | | 18,612.1 | 100.0 | 4,559.4 | 32.4 | 19,185.6 | 100.0 | 7,325.0 | 61.8 |

**Foreign Exchange Export Proceeds and Import Payments by Type of Payment
(Jan. To Date)**

Table 5

Unit: US\$ Million

| Type of Payment | Item | Foreign Exchange Export Proceeds | | | | Foreign Exchange Import Payments | | | |
|--------------------|------|----------------------------------|-------|-----------------------------------|------|----------------------------------|-------|-----------------------------------|------|
| | | Jan.-Nov. 2004 | | Comparison with Jan.-Nov. 2003 | | Jan.-Nov. 2004 | | Comparison with Jan.-Nov. 2003 | |
| | | Amount | % | Amount | % | Amount | % | Amount | % |
| Sight L/C | | 18,116.5 | 9.9 | 1,795.3 | 11.0 | 4,745.3 | 2.7 | 937.0 | 24.6 |
| Usance L/C | | 7,488.1 | 4.1 | 1,300.4 | 21.0 | 36,618.5 | 21.2 | 8,377.4 | 29.7 |
| Collection | | 4,064.6 | 2.2 | 138.6 | 3.5 | 3,245.9 | 1.9 | 535.7 | 19.8 |
| Remittance | | 153,152.7 | 83.8 | 34,098.1 | 28.6 | 128,196.7 | 74.2 | 34,364.8 | 36.6 |
| Total | | 182,821.9 | 100.0 | 37,332.4 | 25.7 | 172,806.4 | 100.0 | 44,214.9 | 34.4 |

CHART 1 COMPARISON OF FOREIGN EXCHANGE EXPORT PROCEEDS AND IMPORT PAYMENTS (2002-2004)

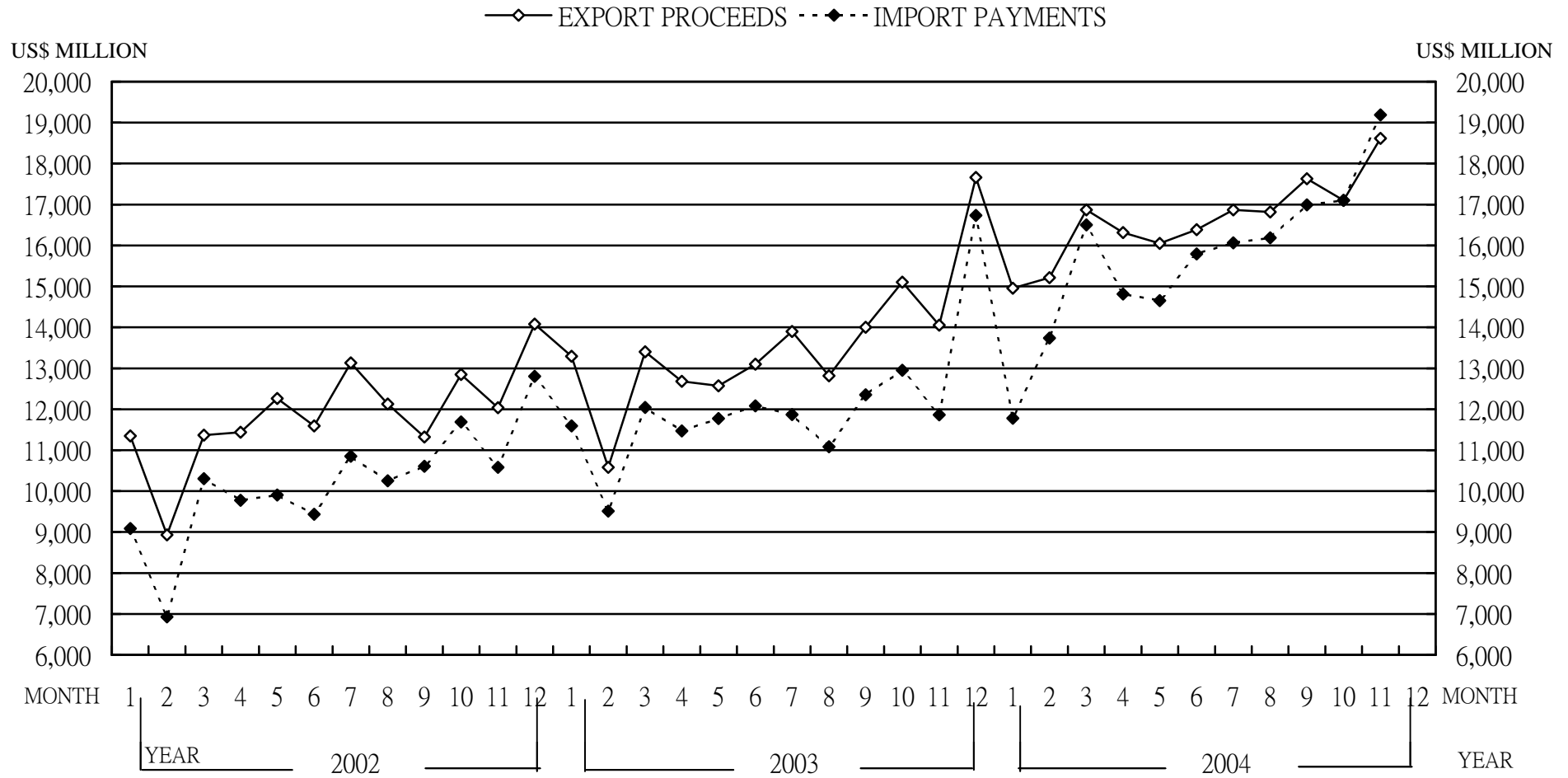
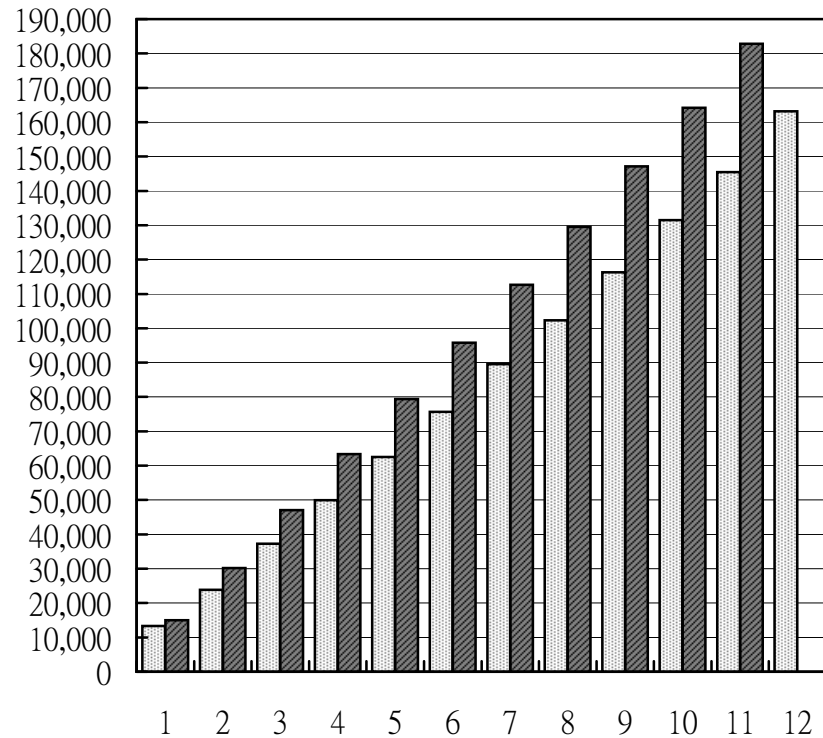


CHART 2 MONTHLY CUMULATIVE OF FOREIGN EXCHANGE EXPORT PROCEEDS AND IMPORT PAYMENTS

(1) EXPORT PROCEEDS

■ 2003 ■ 2004

US\$ MILLION



(2) IMPORT PAYMENTS

■ 2003 ■ 2004

US\$ MILLION

