

# SUMMARY STATISTICS

DEC. 2004

**1. Coverage of Statistics:**

All foreign exchange export proceeds and import payments through banks.

**2. Comparison with Dec. 2003 of export proceeds and import payments:**

Export proceeds totaled US\$ 21,234.8 million, an increase of US\$ 3,576.0 million or 20.3% (Table 1), as compared with Dec. 2003.

Import payments totaled US\$ 20,500.2 million, an increase of US\$ 3,766.0 million or 22.5% (Table 1), as compared with Dec. 2003.

**3. Comparison with Dec. 2003 of export proceeds realized:**

Sold for N.T. Dollars US\$ 2,519.6 million, an increase of US\$ 246.7 million or 10.9% (Table 2), as compared with Dec. 2003.

Retained with exporters US\$ 18,715.2 million, an increase of US\$ 3,329.3 million or 21.6% (Table 2), as compared with Dec. 2003.

**4. Comparison with Dec. 2003 of import payments made:**

Purchased with N.T. Dollars: US\$ 4,730.7 million, an increase of US\$ 452.6 million or 10.6% (Table 3), as compared with Dec. 2003.

Self-acquired foreign exchange imports US\$ 15,769.5 million, an increase of US\$ 3,313.4 million or 26.6% (Table 3), as compared with Dec. 2003.

**5. Foreign exchange exports and imports by type of payment (Table 4):**

(1) Exports:

Sight L/C	US\$	1,746.8 million,	8.2% of total exports.
Usance L/C	US\$	689.2 million,	3.2% of total exports.
Collection	US\$	424.8 million,	2.0% of total exports.
Remittance	US\$	18,374.0 million,	86.6% of total exports.

(2) Imports:

Sight L/C	US\$	468.4 million,	2.3% of total imports.
Usance L/C	US\$	4,387.3 million,	21.4% of total imports.
Collection	US\$	314.7 million,	1.5% of total imports.
Remittance	US\$	15,329.8 million,	74.8% of total imports.

## Comparison of Foreign Exchange Export Proceeds and Import Payments

Table 1

Unit: US\$ Million

Item  Month	Year 2004			Year 2003			Comparison with the Same Period			
	Foreign Exchange Export Proceeds  (1)	Foreign Exchange Import Payments  (2)	Balances  (1)-(2)	Foreign Exchange Export Proceeds  (3)	Foreign Exchange Import Payments  (4)	Balances  (3)-(4)	Last Year			
							Foreign exchange Export Proceeds		Foreign exchange Import Payments	
							Amount	%	Amount	%
2004 01-12	204,055.7	193,303.2	10,752.5	163,148.3	145,325.8	17,822.5	40,907.4	25.1	47,977.4	33.0
2004 01	14,958.4	11,776.7	3,181.7	13,291.5	11,589.9	1,701.6	1,666.9	12.5	186.8	1.6
2004 02	15,215.5	13,740.1	1,475.4	10,579.9	9,510.2	1,069.7	4,635.6	43.8	4,229.9	44.5
2004 03	16,867.9	16,499.3	368.6	13,400.8	12,043.7	1,357.1	3,467.1	25.9	4,455.6	37.0
2004 04	16,316.7	14,811.4	1,505.3	12,680.0	11,472.8	1,207.2	3,636.7	28.7	3,338.6	29.1
2004 05	16,053.5	14,655.1	1,398.4	12,570.0	11,772.6	797.4	3,483.5	27.7	2,882.5	24.5
2004 06	16,384.6	15,794.9	589.7	13,098.5	12,084.7	1,013.8	3,286.1	25.1	3,710.2	30.7
2004 07	16,871.9	16,065.8	806.1	13,896.4	11,872.2	2,024.2	2,975.5	21.4	4,193.6	35.3
2004 08	16,817.1	16,185.6	631.5	12,817.1	11,082.4	1,734.7	4,000.0	31.2	5,103.2	46.0
2004 09	17,626.0	(R) 16,987.7	(R) 638.3	14,000.9	12,351.8	1,649.1	3,625.1	25.9	4,635.9	37.5
2004 10	(R) 17,098.3	(R) 17,102.2	(R) -3.9	15,101.8	12,950.7	2,151.1	1,996.5	13.2	4,151.5	32.1
2004 11	(R) 18,611.0	(R) 19,184.2	(R) -573.2	14,052.6	11,860.6	2,192.0	4,558.4	32.4	7,323.6	61.7
2004 12	21,234.8	20,500.2	734.6	17,658.8	16,734.2	924.6	3,576.0	20.3	3,766.0	22.5

Note : (R) Revised



### Composition of Foreign Exchange Import Payments

Table 3

Unit: US\$ Million

Item       Month	Foreign Exchange Import Payments			Comparison with the Same Period Last Year			
	Total  (1)=(2)+(3)	Purchased with N.T. Dollars  (2)	Non- Purchased from Banks  (3)	Purchased with N.T. Dollars		Non-Purchased from Banks	
				Amount	%	Amount	%
2004 01-12	193,303.2	47,621.8	145,681.4	8,386.4	21.4	39,591.0	37.3
2004 01	11,776.7	3,125.1	8,651.6	-158.5	-4.8	345.3	4.2
2004 02	13,740.1	3,415.9	10,324.2	879.9	34.7	3,350.0	48.0
2004 03	16,499.3	4,152.3	12,347.0	627.3	17.8	3,828.3	44.9
2004 04	14,811.4	3,619.2	11,192.2	400.1	12.4	2,938.5	35.6
2004 05	14,655.1	3,524.4	11,130.7	147.4	4.4	2,735.1	32.6
2004 06	15,794.9	3,911.8	11,883.1	502.5	14.7	3,207.7	37.0
2004 07	16,065.8	3,936.4	12,129.4	507.6	14.8	3,686.0	43.7
2004 08	16,185.6	4,008.2	12,177.4	1,101.2	37.9	4,002.0	49.0
2004 09	(R) 16,987.7	4,321.0	(R) 12,666.7	1,272.2	41.7	3,363.7	36.2
2004 10	(R) 17,102.2	(R) 4,166.7	(R) 12,935.5	1,037.3	33.1	3,114.2	31.7
2004 11	(R) 19,184.2	(R) 4,710.1	(R) 14,474.1	1,616.8	52.3	5,706.8	65.1
2004 12	20,500.2	4,730.7	15,769.5	452.6	10.6	3,313.4	26.6

Note : \* The importers withdraw their foreign currency deposits from banks for import payments, etc.

**Foreign Exchange Export Proceeds and Import Payments by Type of Payment  
(Current Month)**

**Table 4**

**Unit: US\$ Million**

Type of Payment	Item	Foreign Exchange Export Proceeds				Foreign Exchange Import Payments			
		Dec. <b>2004</b>		Comparison with Dec. <b>2003</b>		Dec. <b>2004</b>		Comparison with Dec. <b>2003</b>	
		Amount	%	Amount	%	Amount	%	Amount	%
Sight L/C		1,746.8	8.2	192.6	12.4	468.4	2.3	-108.2	-18.8
Usance L/C		689.2	3.2	7.2	1.1	4,387.3	21.4	860.4	24.4
Collection		424.8	2.0	23.9	6.0	314.7	1.5	10.2	3.3
Remittance		18,374.0	86.6	3,352.3	22.3	15,329.8	74.8	3,003.6	24.4
<b>Total</b>		<b>21,234.8</b>	<b>100.0</b>	<b>3,576.0</b>	<b>20.3</b>	<b>20,500.2</b>	<b>100.0</b>	<b>3,766.0</b>	<b>22.5</b>

**Foreign Exchange Export Proceeds and Import Payments by Type of Payment  
(Jan. To Date)**

**Table 5**

**Unit: US\$ Million**

Type of Payment	Item	Foreign Exchange Export Proceeds				Foreign Exchange Import Payments			
		Jan.-Dec. <b>2004</b>		Comparison with Jan.-Dec. <b>2003</b>		Jan.-Dec. <b>2004</b>		Comparison with Jan.-Dec. <b>2003</b>	
		Amount	%	Amount	%	Amount	%	Amount	%
Sight L/C		19,863.2	9.7	1,987.7	11.1	5,213.7	2.7	828.8	18.9
Usance L/C		8,177.4	4.0	1,307.7	19.0	41,005.8	21.2	9,237.8	29.1
Collection		4,489.3	2.2	162.4	3.8	3,560.6	1.8	545.9	18.1
Remittance		171,525.8	84.1	37,449.6	27.9	143,523.1	74.3	37,364.9	35.2
<b>Total</b>		<b>204,055.7</b>	<b>100.0</b>	<b>40,907.4</b>	<b>25.1</b>	<b>193,303.2</b>	<b>100.0</b>	<b>47,977.4</b>	<b>33.0</b>

CHART 1 COMPARISON OF FOREIGN EXCHANGE EXPORT PROCEEDS AND IMPORT PAYMENTS (2002-2004)

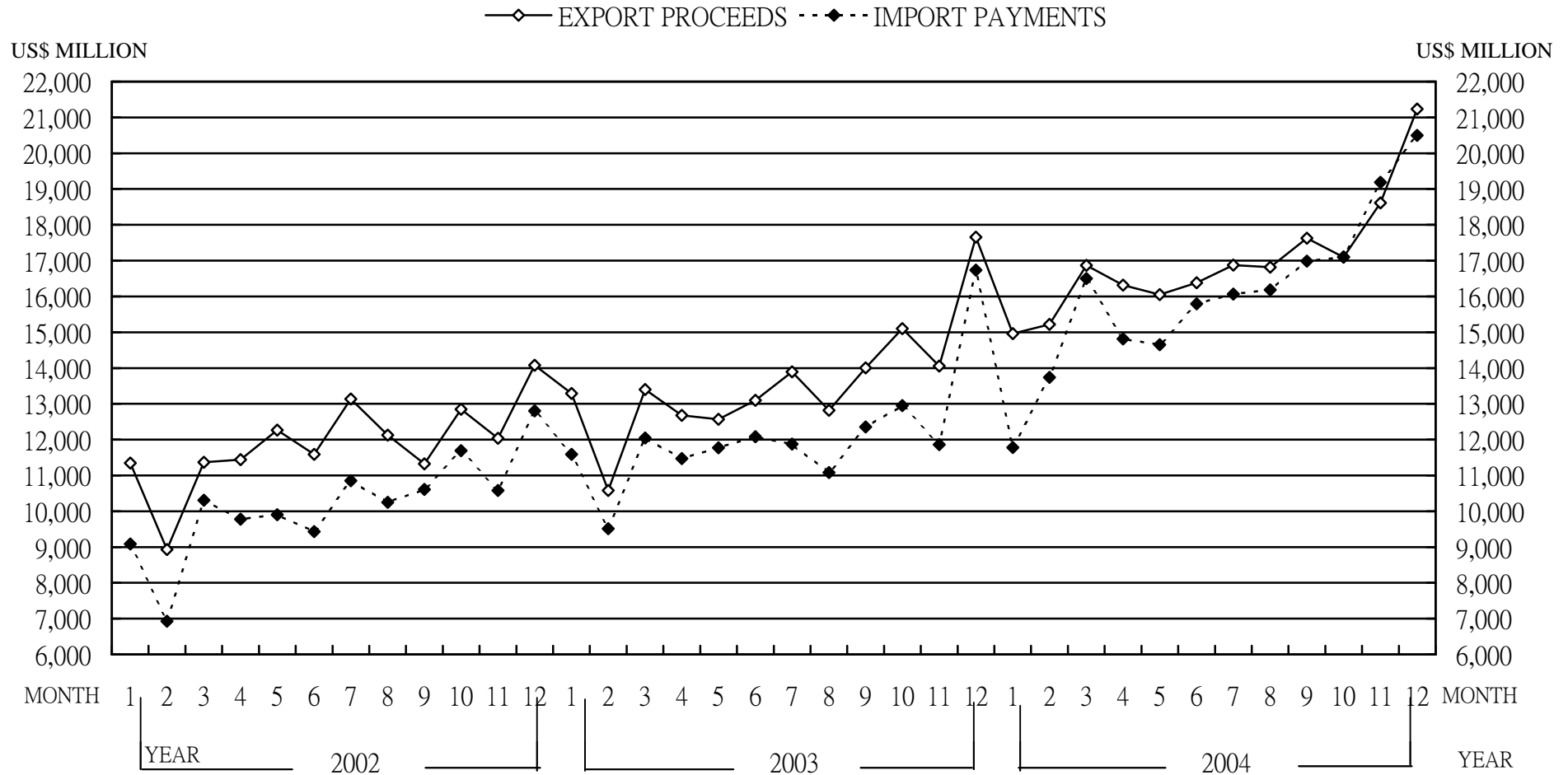
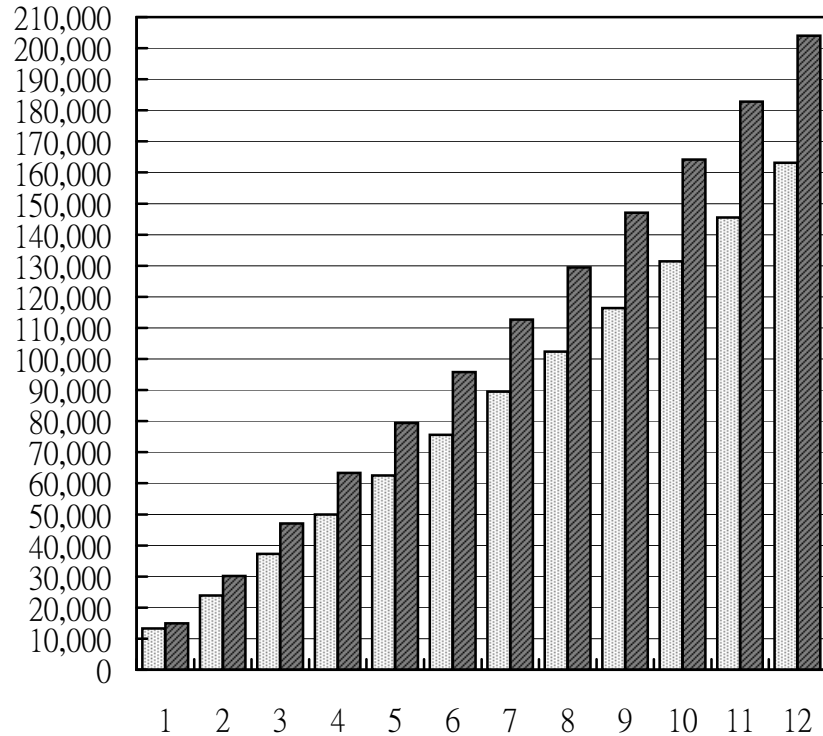


CHART 2 MONTHLY CUMULATIVE OF FOREIGN EXCHANGE EXPORT PROCEEDS AND IMPORT PAYMENTS

(1) EXPORT PROCEEDS

■ 2003 ■ 2004

US\$ MILLION



(2) IMPORT PAYMENTS

■ 2003 ■ 2004

US\$ MILLION

