

SUMMARY STATISTICS

FEB. 2005

1. Coverage of Statistics:

All foreign exchange export proceeds and import payments through banks.

2. Comparison with Feb. 2004 of export proceeds and import payments:

Export proceeds totaled US\$ 14,263.8 million, a decrease of US\$ 951.7 million or 6.3% (Table 1), as compared with Feb. 2004.

Import payments totaled US\$ 12,713.1 million, a decrease of US\$ 1,027.0 million or 7.5% (Table 1), as compared with Feb. 2004.

3. Comparison with Feb. 2004 of export proceeds realized:

Sold for N.T. Dollars US\$ 1,868.9 million, a decrease of US\$ 264.3 million or 12.4% (Table 2), as compared with Feb. 2004.

Retained with exporters US\$ 12,394.9 million, a decrease of US\$ 687.4 million or 5.3% (Table 2), as compared with Feb. 2004.

4. Comparison with Feb. 2004 of import payments made:

Purchased with N.T. Dollars: US\$ 3,050.9 million, a decrease of US\$ 365.0 million or 10.7% (Table 3), as compared with Feb. 2004.

Self-acquired foreign exchange imports US\$ 9,662.2 million, a decrease of US\$ 662.0 million or 6.4% (Table 3), as compared with Feb. 2004.

5. Foreign exchange exports and imports by type of payment (Table 4):

(1) Exports:

Sight L/C US\$ 1,395.9 million, 9.8% of total exports.

Usance L/C US\$ 585.0 million, 4.1% of total exports.

Collection US\$ 305.2 million, 2.1% of total exports.

Remittance US\$ 11,977.7 million, 84.0% of total exports.

(2) Imports:

Sight L/C US\$ 303.5 million, 2.4% of total imports.

Usance L/C US\$ 2,826.3 million, 22.2% of total imports.

Collection US\$ 252.0 million, 2.0% of total imports.

Remittance US\$ 9,331.3 million, 73.4% of total imports.

Comparison of Foreign Exchange Export Proceeds and Import Payments

Table 1

Unit: US\$ Million

Item Month	Year 2005			Year 2004			Comparison with the Same Period			
	Foreign Exchange Export Proceeds	Foreign Exchange Import Payments	Balances	Foreign Exchange Export Proceeds	Foreign Exchange Import Payments	Balances	Last Year			
	(1)	(2)	(1)-(2)	(3)	(4)	(3)-(4)	Foreign exchange Export Proceeds		Foreign exchange Import Payments	
							Amount	%	Amount	%
2005 01-02	31,266.6	29,249.8	2,016.8	30,173.9	25,516.8	4,657.1	1,092.7	3.6	3,733.0	14.6
2005 01	(R) 17,002.8	(R) 16,536.7	(R) 466.1	14,958.4	11,776.7	3,181.7	2,044.4	13.7	4,760.0	40.4
2005 02	14,263.8	12,713.1	1,550.7	15,215.5	13,740.1	1,475.4	-951.7	-6.3	-1,027.0	-7.5

Note : (R) Revised

Composition of Foreign Exchange Export Proceeds

Table 2

Unit: US\$ Million

Item Month	Foreign Exchange Export Proceeds			Comparison with the Same Period Last Year			
	Total	Sold for N.T. Dollars	Retained with Exporters	Sold for N.T. Dollars		Retained with Exporters	
	(1)=(2)+(3)	(2)	(3)	Amount	%	Amount	%
2005 01-02	31,266.6	4,050.1	27,216.5	-184.7	-4.4	1,277.4	4.9
2005 01	(R) 17,002.8	(R) 2,181.2	14,821.6	79.6	3.8	1,964.8	15.3
2005 02	14,263.8	1,868.9	12,394.9	-264.3	-12.4	-687.4	-5.3

Note : * The export proceeds may be used to repay foreign currency loans or placed in the foreign currency deposits of domestic banks, etc..
 And later on the deposits may be sold for N.T. Dollars, used to pay for importation of goods, or outwardly remitted whenever needed.
 The deposits which have been sold for N.T. Dollars shall no longer be included in the figure of column (2) of this table.

Composition of Foreign Exchange Import Payments

Table 3

Unit: US\$ Million

Item Month	Foreign Exchange Import Payments			Comparison with the Same Period Last Year			
	Total	Purchased with N.T. Dollars	Non- Purchased from Banks	Purchased with N.T. Dollars		Non-Purchased from Banks	
	(1)=(2)+(3)	(2)	(3)	Amount	%	Amount	%
2005 01-02	29,249.8	7,024.9	22,224.9	483.9	7.4	3,249.1	17.1
2005 01	(R) 16,536.7	(R) 3,974.0	12,562.7	848.9	27.2	3,911.1	45.2
2005 02	12,713.1	3,050.9	9,662.2	-365.0	-10.7	-662.0	-6.4

Note : * The importers withdraw their foreign currency deposits from banks for import payments, etc.

**Foreign Exchange Export Proceeds and Import Payments by Type of Payment
(Current Month)**

Table 4

Unit: US\$ Million

Type of Payment	Item	Foreign Exchange Export Proceeds				Foreign Exchange Import Payments			
		Feb. 2005		Comparison with Feb. 2004		Feb. 2005		Comparison with Feb. 2004	
		Amount	%	Amount	%	Amount	%	Amount	%
Sight L/C		1,395.9	9.8	7.2	0.5	303.5	2.4	-50.4	-14.2
Usance L/C		585.0	4.1	-42.0	-6.7	2,826.3	22.2	-121.2	-4.1
Collection		305.2	2.1	-20.2	-6.2	252.0	2.0	-48.8	-16.2
Remittance		11,977.7	84.0	-896.7	-7.0	9,331.3	73.4	-806.6	-8.0
Total		14,263.8	100.0	-951.7	-6.3	12,713.1	100.0	-1,027.0	-7.5

**Foreign Exchange Export Proceeds and Import Payments by Type of Payment
(Jan. To Date)**

Table 5

Unit: US\$ Million

Type of Payment	Item	Foreign Exchange Export Proceeds				Foreign Exchange Import Payments			
		Jan.-Feb. 2005		Comparison with Jan.-Feb. 2004		Jan.-Feb. 2005		Comparison with Jan.-Feb. 2004	
		Amount	%	Amount	%	Amount	%	Amount	%
Sight L/C		3,086.6	9.9	310.3	11.2	677.9	2.3	42.5	6.7
Usance L/C		1,260.0	4.0	-3.9	-0.3	6,084.1	20.8	633.8	11.6
Collection		668.2	2.1	-28.5	-4.1	522.7	1.8	-51.5	-9.0
Remittance		26,251.8	84.0	814.8	3.2	21,965.1	75.1	3,108.2	16.5
Total		31,266.6	100.0	1,092.7	3.6	29,249.8	100.0	3,733.0	14.6

CHART 1 COMPARISON OF FOREIGN EXCHANGE EXPORT PROCEEDS AND IMPORT PAYMENTS (2003-2005)

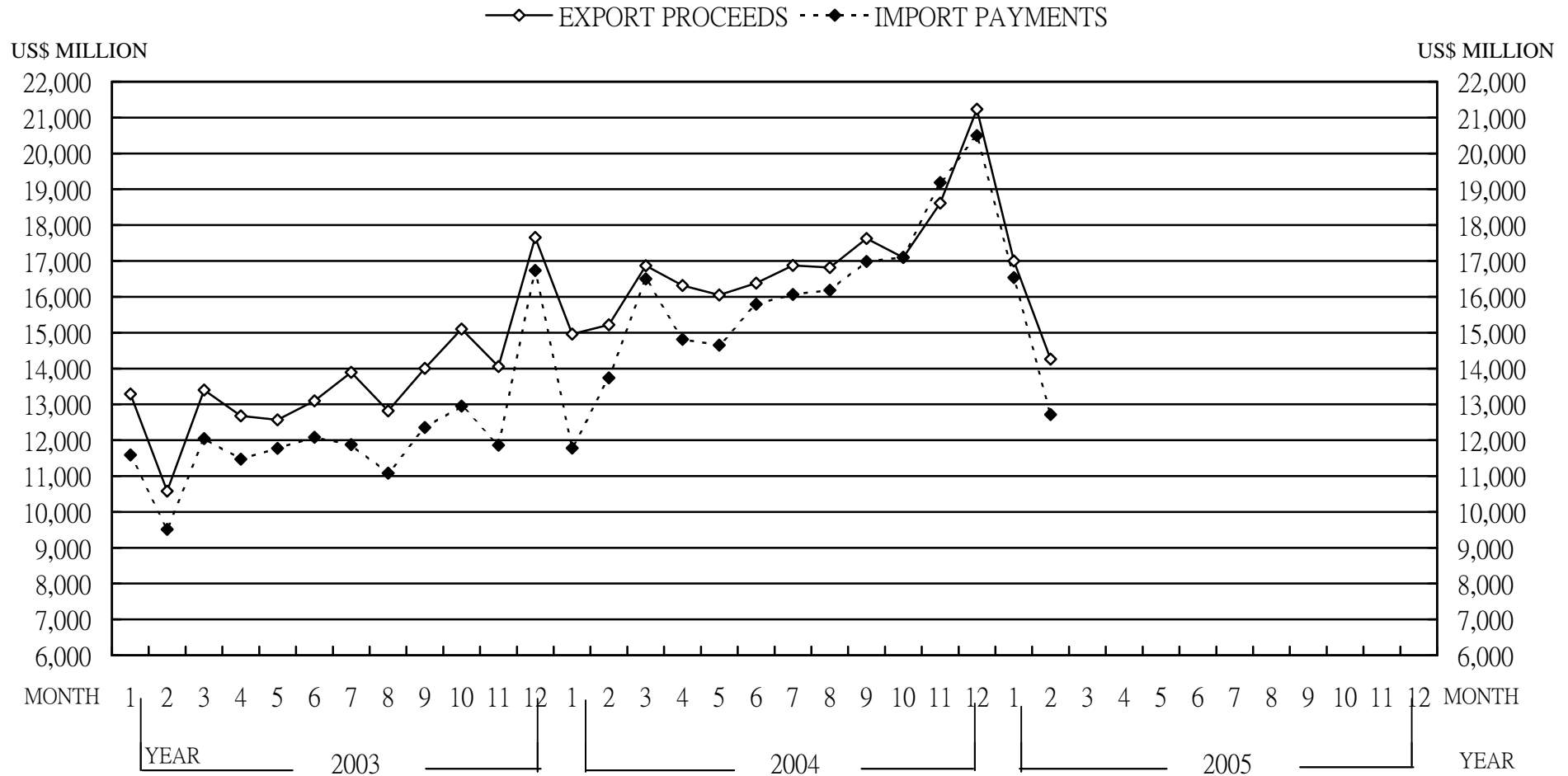
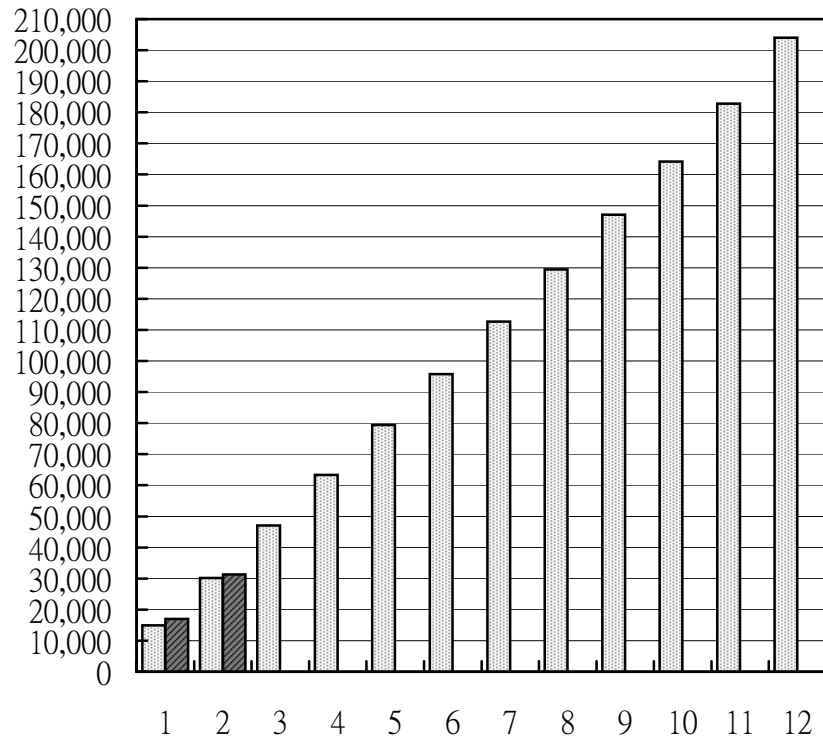


CHART 2 MONTHLY CUMULATIVE OF FOREIGN EXCHANGE EXPORT PROCEEDS AND IMPORT PAYMENTS

(1) EXPORT PROCEEDS

■ 2004 ■ 2005

US\$ MILLION



(2) IMPORT PAYMENTS

■ 2004 ■ 2005

US\$ MILLION

