

SUMMARY STATISTICS

MAR. 2005

1. Coverage of Statistics:

All foreign exchange export proceeds and import payments through banks.

2. Comparison with Mar. 2004 of export proceeds and import payments:

Export proceeds totaled US\$ 20,482.5 million, an increase of US\$ 3,614.6 million or 21.4% (Table 1), as compared with Mar. 2004.

Import payments totaled US\$ 20,281.3 million, an increase of US\$ 3,782.0 million or 22.9% (Table 1), as compared with Mar. 2004.

3. Comparison with Mar. 2004 of export proceeds realized:

Sold for N.T. Dollars US\$ 2,830.6 million, an increase of US\$ 508.5 million or 21.9% (Table 2), as compared with Mar. 2004.

Retained with exporters US\$ 17,651.9 million, an increase of US\$ 3,106.1 million or 21.4% (Table 2), as compared with Mar. 2004.

4. Comparison with Mar. 2004 of import payments made:

Purchased with N.T. Dollars: US\$ 4,529.8 million, an increase of US\$ 377.5 million or 9.1% (Table 3), as compared with Mar. 2004.

Self-acquired foreign exchange imports US\$ 15,751.5 million, an increase of US\$ 3,404.5 million or 27.6% (Table 3), as compared with Mar. 2004.

5. Foreign exchange exports and imports by type of payment (Table 4):

(1) Exports:

| | | | | | |
|------------|------|----------|----------|-------|-------------------|
| Sight L/C | US\$ | 2,050.6 | million, | 10.0% | of total exports. |
| Usance L/C | US\$ | 935.8 | million, | 4.6% | of total exports. |
| Collection | US\$ | 404.4 | million, | 2.0% | of total exports. |
| Remittance | US\$ | 17,091.7 | million, | 83.4% | of total exports. |

(2) Imports:

| | | | | | |
|------------|------|----------|----------|-------|-------------------|
| Sight L/C | US\$ | 495.4 | million, | 2.4% | of total imports. |
| Usance L/C | US\$ | 4,182.5 | million, | 20.6% | of total imports. |
| Collection | US\$ | 309.3 | million, | 1.5% | of total imports. |
| Remittance | US\$ | 15,294.1 | million, | 75.5% | of total imports. |

Comparison of Foreign Exchange Export Proceeds and Import Payments

Table 1

Unit: US\$ Million

| Item Month | Year 2005 | | | Year 2004 | | | Comparison with the Same Period | | | |
|-----------------------|---|---|-------------|---|---|----------|-------------------------------------|------|-------------------------------------|------|
| | Foreign Exchange Export Proceeds | Foreign Exchange Import Payments | Balances | Foreign Exchange Export Proceeds | Foreign Exchange Import Payments | Balances | Last Year | | | |
| | (1) | (2) | (1)-(2) | (3) | (4) | (3)-(4) | Foreign exchange Export Proceeds | | Foreign exchange Import Payments | |
| | | | | | | | Amount | % | Amount | % |
| 2005 01-03 | 51,747.7 | 49,531.5 | 2,216.2 | 47,041.8 | 42,016.2 | 5,025.6 | 4,705.9 | 10.0 | 7,515.3 | 17.9 |
| 2005 01 | (R) 17,001.5 | (R) 16,536.6 | (R) 464.9 | 14,958.4 | 11,776.7 | 3,181.7 | 2,043.1 | 13.7 | 4,759.9 | 40.4 |
| 2005 02 | (R) 14,263.7 | (R) 12,713.6 | (R) 1,550.1 | 15,215.5 | 13,740.2 | 1,475.3 | -951.8 | -6.3 | -1,026.6 | -7.5 |
| 2005 03 | 20,482.5 | 20,281.3 | 201.2 | 16,867.9 | 16,499.3 | 368.6 | 3,614.6 | 21.4 | 3,782.0 | 22.9 |

Note : (R) Revised

Composition of Foreign Exchange Export Proceeds

Table 2

Unit: US\$ Million

| Item Month | Foreign Exchange Export Proceeds | | | Comparison with the Same Period Last Year | | | |
|--|----------------------------------|-----------------------------|-------------------------------|--|-------|----------------------------|------|
| | Total | Sold for N.T. Dollars | Retained with Exporters | Sold for N.T. Dollars | | Retained with Exporters | |
| | (1)=(2)+(3) | (2) | (3) | Amount | % | Amount | % |
| 2005 01-03 | 51,747.7 | 6,880.6 | 44,867.1 | 323.7 | 4.9 | 4,382.2 | 10.8 |
| 2005 01 | (R) 17,001.5 | (R) 2,181.1 | (R) 14,820.4 | 79.5 | 3.8 | 1,963.6 | 15.3 |
| 2005 02 | (R) 14,263.7 | 1,868.9 | (R) 12,394.8 | -264.3 | -12.4 | -687.5 | -5.3 |
| 2005 03 | 20,482.5 | 2,830.6 | 17,651.9 | 508.5 | 21.9 | 3,106.1 | 21.4 |

Note : * The export proceeds may be used to repay foreign currency loans or placed in the foreign currency deposits of domestic banks, etc..
 And later on the deposits may be sold for N.T. Dollars, used to pay for importation of goods, or outwardly remitted whenever needed.
 The deposits which have been sold for N.T. Dollars shall no longer be included in the figure of column (2) of this table.

Composition of Foreign Exchange Import Payments

Table 3

Unit: US\$ Million

| Item Month | Foreign Exchange Import Payments | | | Comparison with the Same Period Last Year | | | |
|--|----------------------------------|-----------------------------------|---------------------------------|--|-------|-----------------------------|------|
| | Total | Purchased with N.T. Dollars | Non- Purchased from Banks | Purchased with N.T. Dollars | | Non-Purchased from Banks | |
| | (1)=(2)+(3) | (2) | (3) | Amount | % | Amount | % |
| 2005 01-03 | 49,531.5 | 11,555.2 | 37,976.3 | 861.9 | 8.1 | 6,653.4 | 21.2 |
| 2005 01 | (R) 16,536.6 | (R) 3,974.1 | (R) 12,562.5 | 849.0 | 27.2 | 3,910.9 | 45.2 |
| 2005 02 | (R) 12,713.6 | (R) 3,051.3 | (R) 9,662.3 | -364.6 | -10.7 | -662.0 | -6.4 |
| 2005 03 | 20,281.3 | 4,529.8 | 15,751.5 | 377.5 | 9.1 | 3,404.5 | 27.6 |

Note : * The importers withdraw their foreign currency deposits from banks for import payments, etc.

**Foreign Exchange Export Proceeds and Import Payments by Type of Payment
(Current Month)**

Table 4

Unit: US\$ Million

| Type of Payment | Item | Foreign Exchange Export Proceeds | | | | Foreign Exchange Import Payments | | | |
|--------------------|------|----------------------------------|-------|------------------------------|------|----------------------------------|-------|------------------------------|------|
| | | Mar. 2005 | | Comparison with Mar. 2004 | | Mar. 2005 | | Comparison with Mar. 2004 | |
| | | Amount | % | Amount | % | Amount | % | Amount | % |
| Sight L/C | | 2,050.6 | 10.0 | 422.5 | 26.0 | 495.4 | 2.4 | 53.7 | 12.2 |
| Usance L/C | | 935.8 | 4.6 | 247.2 | 35.9 | 4,182.5 | 20.6 | 554.5 | 15.3 |
| Collection | | 404.4 | 2.0 | 18.1 | 4.7 | 309.3 | 1.5 | -24.2 | -7.3 |
| Remittance | | 17,091.7 | 83.4 | 2,926.8 | 20.7 | 15,294.1 | 75.5 | 3,198.0 | 26.4 |
| Total | | 20,482.5 | 100.0 | 3,614.6 | 21.4 | 20,281.3 | 100.0 | 3,782.0 | 22.9 |

**Foreign Exchange Export Proceeds and Import Payments by Type of Payment
(Jan. To Date)**

Table 5

Unit: US\$ Million

| Type of Payment | Item | Foreign Exchange Export Proceeds | | | | Foreign Exchange Import Payments | | | |
|--------------------|------|----------------------------------|--------------|-----------------------------------|-------------|----------------------------------|--------------|-----------------------------------|-------------|
| | | Jan.-Mar. 2005 | | Comparison with Jan.-Mar. 2004 | | Jan.-Mar. 2005 | | Comparison with Jan.-Mar. 2004 | |
| | | Amount | % | Amount | % | Amount | % | Amount | % |
| Sight L/C | | 5,137.2 | 9.9 | 732.7 | 16.6 | 1,173.2 | 2.4 | 96.2 | 8.9 |
| Usance L/C | | 2,195.7 | 4.2 | 243.1 | 12.5 | 10,267.1 | 20.7 | 1,188.8 | 13.1 |
| Collection | | 1,072.6 | 2.1 | -10.4 | -1.0 | 832.0 | 1.7 | -75.7 | -8.3 |
| Remittance | | 43,342.2 | 83.8 | 3,740.5 | 9.4 | 37,259.2 | 75.2 | 6,306.0 | 20.4 |
| Total | | 51,747.7 | 100.0 | 4,705.9 | 10.0 | 49,531.5 | 100.0 | 7,515.3 | 17.9 |

CHART 1 COMPARISON OF FOREIGN EXCHANGE EXPORT PROCEEDS AND IMPORT PAYMENTS (2003-2005)

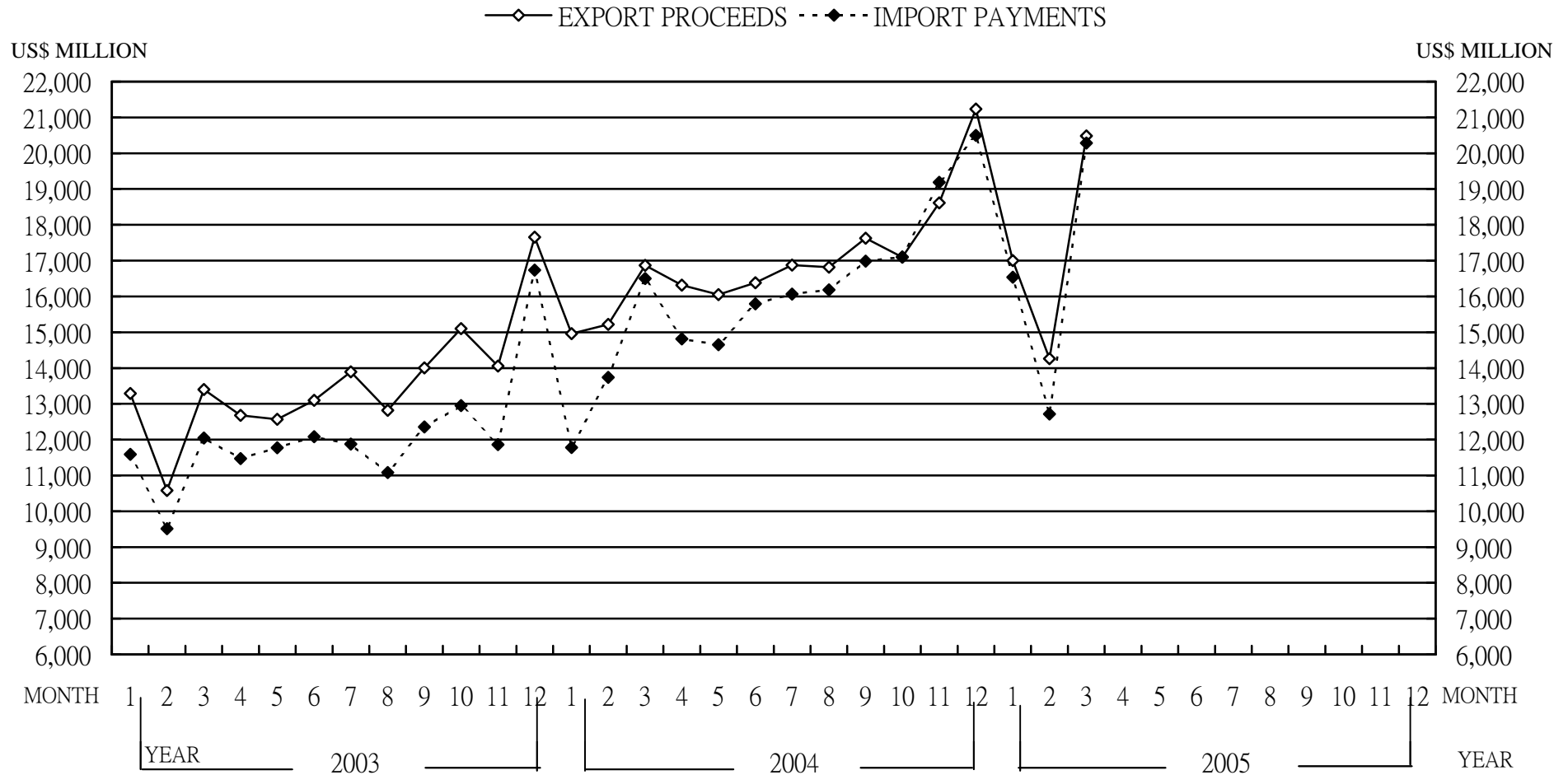
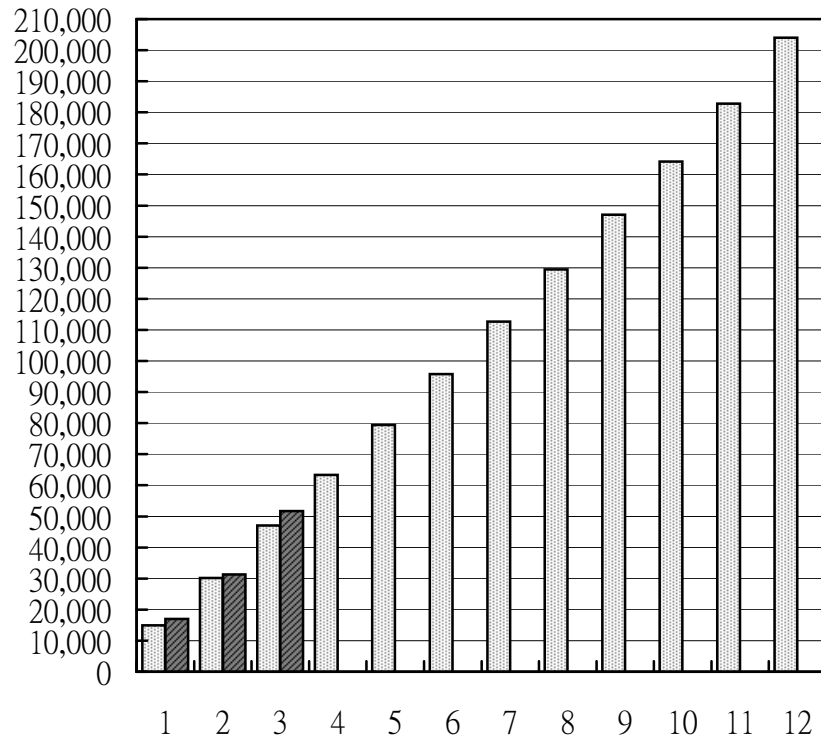


CHART 2 MONTHLY CUMULATIVE OF FOREIGN EXCHANGE EXPORT PROCEEDS AND IMPORT PAYMENTS

(1) EXPORT PROCEEDS

■ 2004 ■ 2005

US\$ MILLION



(2) IMPORT PAYMENTS

■ 2004 ■ 2005

US\$ MILLION

