

# **SUMMARY STATISTICS**

**JUN. 2006**

**1. Coverage of Statistics:**

**All foreign exchange export proceeds and import payments through banks.**

**2. Comparison with Jun. 2005 of export proceeds and import payments:**

**Export proceeds totaled US\$ 20,206.1 million, an increase of US\$ 1,454.5 million or 7.8% (Table 1), as compared with Jun. 2005.**

**Import payments totaled US\$ 19,450.5 million, an increase of US\$ 912.2 million or 4.9% (Table 1), as compared with Jun. 2005.**

**3. Comparison with Jun. 2005 of export proceeds realized:**

**Sold for N.T. Dollars US\$ 2,484.9 million, an increase of US\$ 65.0 million or 2.7% (Table 2), as compared with Jun. 2005.**

**Retained with exporters US\$ 17,721.2 million, an increase of US\$ 1,389.5 million or 8.5% (Table 2), as compared with Jun. 2005.**

**4. Comparison with Jun. 2005 of import payments made:**

**Purchased with N.T. Dollars: US\$ 3,995.9 million, a decrease of US\$ 189.4 million or 4.5% (Table 3), as compared with Jun. 2005.**

**Self-acquired foreign exchange imports US\$ 15,454.6 million, an increase of US\$ 1,101.6 million or 7.7% (Table 3), as compared with Jun. 2005.**

**5. Foreign exchange exports and imports by type of payment (Table 4):**

**(1) Exports:**

<b>Sight L/C</b>	<b>US\$</b>	<b>1,882.9 million,</b>	<b>9.3% of total exports.</b>
<b>Usance L/C</b>	<b>US\$</b>	<b>1,073.2 million,</b>	<b>5.3% of total exports.</b>
<b>Collection</b>	<b>US\$</b>	<b>386.3 million,</b>	<b>1.9% of total exports.</b>
<b>Remittance</b>	<b>US\$</b>	<b>16,863.7 million,</b>	<b>83.5% of total exports.</b>

**(2) Imports:**

<b>Sight L/C</b>	<b>US\$</b>	<b>542.3 million,</b>	<b>2.8% of total imports.</b>
<b>Usance L/C</b>	<b>US\$</b>	<b>3,528.7 million,</b>	<b>18.1% of total imports.</b>
<b>Collection</b>	<b>US\$</b>	<b>250.9 million,</b>	<b>1.3% of total imports.</b>
<b>Remittance</b>	<b>US\$</b>	<b>15,128.6 million,</b>	<b>77.8% of total imports.</b>

## Comparison of Foreign Exchange Export Proceeds and Import Payments

**Table 1**

**Unit: US\$ Million**

Item  Month	Year 2006			Year 2005			Comparison with the Same Period			
	Foreign Exchange Export Proceeds	Foreign Exchange Import Payments	Balances	Foreign Exchange Export Proceeds	Foreign Exchange Import Payments	Balances	Last Year			
	(1)	(2)	(1)-(2)	(3)	(4)	(3)-(4)	Foreign exchange Export Proceeds		Foreign exchange Import Payments	
							Amount	%	Amount	%
<b>2006 01-06</b>	<b>105,650.7</b>	<b>105,009.5</b>	<b>641.2</b>	<b>106,114.1</b>	<b>103,627.9</b>	<b>2,486.2</b>	<b>-463.4</b>	<b>-0.4</b>	<b>1,381.6</b>	<b>1.3</b>
<b>2006 01</b>	(R) <b>16,806.4</b>	(R) <b>16,922.9</b>	(R) <b>-116.5</b>	<b>16,998.5</b>	<b>16,536.3</b>	<b>462.2</b>	<b>-192.1</b>	<b>-1.1</b>	<b>386.6</b>	<b>2.3</b>
<b>2006 02</b>	<b>15,044.4</b>	(R) <b>14,142.8</b>	(R) <b>901.6</b>	<b>14,262.3</b>	<b>12,713.4</b>	<b>1,548.9</b>	<b>782.1</b>	<b>5.5</b>	<b>1,429.4</b>	<b>11.2</b>
<b>2006 03</b>	<b>19,299.5</b>	(R) <b>19,564.2</b>	(R) <b>-264.7</b>	<b>20,474.9</b>	<b>20,245.9</b>	<b>229.0</b>	<b>-1,175.4</b>	<b>-5.7</b>	<b>-681.7</b>	<b>-3.4</b>
<b>2006 04</b>	(R) <b>16,069.6</b>	(R) <b>16,507.9</b>	(R) <b>-438.3</b>	<b>17,780.8</b>	<b>17,996.9</b>	<b>-216.1</b>	<b>-1,711.2</b>	<b>-9.6</b>	<b>-1,489.0</b>	<b>-8.3</b>
<b>2006 05</b>	(R) <b>18,224.7</b>	(R) <b>18,421.2</b>	(R) <b>-196.5</b>	<b>17,846.0</b>	<b>17,597.1</b>	<b>248.9</b>	<b>378.7</b>	<b>2.1</b>	<b>824.1</b>	<b>4.7</b>
<b>2006 06</b>	<b>20,206.1</b>	<b>19,450.5</b>	<b>755.6</b>	<b>18,751.6</b>	<b>18,538.3</b>	<b>213.3</b>	<b>1,454.5</b>	<b>7.8</b>	<b>912.2</b>	<b>4.9</b>

**Note : (R) Revised**

### Composition of Foreign Exchange Export Proceeds

**Table 2**

**Unit: US\$ Million**

Item  Month	Foreign Exchange Export Proceeds			Comparison with the Same Period Last Year			
	Total	Sold for N.T. Dollars	Retained with Exporters	Sold for N.T. Dollars		Retained with Exporters	
	(1)=(2)+(3)	(2)	(3)	Amount	%	Amount	%
<b>2006</b>							
<b>01-06</b>	<b>105,650.7</b>	<b>12,870.5</b>	<b>92,780.2</b>	<b>-933.7</b>	<b>-6.8</b>	<b>470.3</b>	<b>0.5</b>
<b>2006</b>							
<b>01</b>	(R) 16,806.4	2,172.6	(R) 14,633.8	-8.5	-0.4	-183.6	-1.2
<b>2006</b>							
<b>02</b>	15,044.4	1,695.6	13,348.8	-173.7	-9.3	955.8	7.7
<b>2006</b>							
<b>03</b>	19,299.5	2,375.0	16,924.5	-454.8	-16.1	-720.6	-4.1
<b>2006</b>							
<b>04</b>	(R) 16,069.6	1,808.4	(R) 14,261.2	-392.8	-17.8	-1,318.4	-8.5
<b>2006</b>							
<b>05</b>	(R) 18,224.7	(R) 2,334.0	(R) 15,890.7	31.1	1.4	347.6	2.2
<b>2006</b>							
<b>06</b>	20,206.1	2,484.9	17,721.2	65.0	2.7	1,389.5	8.5

**Note : \*** The export proceeds may be used to repay foreign currency loans or placed in the foreign currency deposits of domestic banks, etc..  
And later on the deposits may be sold for N.T. Dollars, used to pay for importation of goods, or outwardly remitted whenever needed.  
The deposits which have been sold for N.T. Dollars shall no longer be included in the figure of column (2) of this table.

### Composition of Foreign Exchange Import Payments

**Table 3**

**Unit: US\$ Million**

Item  Month	Foreign Exchange Import Payments			Comparison with the Same Period Last Year			
	Total	Purchased with N.T. Dollars	Non- Purchased from Banks	Purchased with N.T. Dollars		Non-Purchased from Banks	
	(1)=(2)+(3)	(2)	(3)	Amount	%	Amount	%
<b>2006</b>							
<b>01-06</b>	<b>105,009.5</b>	<b>22,916.4</b>	<b>82,093.1</b>	<b>-884.6</b>	<b>-3.7</b>	<b>2,266.2</b>	<b>2.8</b>
<b>2006</b>							
<b>01</b>	(R) 16,922.9	(R) 3,990.0	(R) 12,932.9	15.9	0.4	370.7	3.0
<b>2006</b>							
<b>02</b>	(R) 14,142.8	3,051.2	(R) 11,091.6	-0.1	0.0	1,429.5	14.8
<b>2006</b>							
<b>03</b>	(R) 19,564.2	4,171.4	(R) 15,392.8	-358.9	-7.9	-322.8	-2.1
<b>2006</b>							
<b>04</b>	(R) 16,507.9	(R) 4,060.7	(R) 12,447.2	123.1	3.1	-1,612.1	-11.5
<b>2006</b>							
<b>05</b>	(R) 18,421.2	(R) 3,647.2	(R) 14,774.0	-475.2	-11.5	1,299.3	9.6
<b>2006</b>							
<b>06</b>	19,450.5	3,995.9	15,454.6	-189.4	-4.5	1,101.6	7.7

**Note : \* The importers withdraw their foreign currency deposits from banks for import payments, etc.**

**Foreign Exchange Export Proceeds and Import Payments by Type of Payment  
(Current Month)**

**Table 4**

**Unit: US\$ Million**

<div style="display: flex; align-items: center;"> <div style="writing-mode: vertical-rl; transform: rotate(180deg);">Type of Payment</div> <div>Item</div> </div>	Foreign Exchange Export Proceeds				Foreign Exchange Import Payments			
	Jun. 2006		Comparison with Jun. 2005		Jun. 2006		Comparison with Jun. 2005	
	Amount	%	Amount	%	Amount	%	Amount	%
<b>Sight L/C</b>	1,882.9	9.3	-3.2	-0.2	542.3	2.8	5.1	0.9
<b>Usance L/C</b>	1,073.2	5.3	333.9	45.2	3,528.7	18.1	-572.1	-14.0
<b>Collection</b>	386.3	1.9	-39.7	-9.3	250.9	1.3	-47.7	-16.0
<b>Remittance</b>	16,863.7	83.5	1,163.5	7.4	15,128.6	77.8	1,526.9	11.2
<b>Total</b>	20,206.1	100.0	1,454.5	7.8	19,450.5	100.0	912.2	4.9

**Foreign Exchange Export Proceeds and Import Payments by Type of Payment  
(Jan. To Date)**

**Table 5**

**Unit: US\$ Million**

Type of Payment	Item	Foreign Exchange Export Proceeds				Foreign Exchange Import Payments			
		Jan.-Jun. 2006		Comparison with Jan.-Jun. 2005		Jan.-Jun. 2006		Comparison with Jan.-Jun. 2005	
		Amount	%	Amount	%	Amount	%	Amount	%
	<b>Sight L/C</b>	<b>10,196.2</b>	<b>9.7</b>	<b>-365.6</b>	<b>-3.5</b>	<b>2,401.5</b>	<b>2.3</b>	<b>-360.9</b>	<b>-13.1</b>
	<b>Usance L/C</b>	<b>5,409.1</b>	<b>5.1</b>	<b>977.2</b>	<b>22.0</b>	<b>21,585.4</b>	<b>20.6</b>	<b>-242.1</b>	<b>-1.1</b>
	<b>Collection</b>	<b>2,116.3</b>	<b>2.0</b>	<b>-148.7</b>	<b>-6.6</b>	<b>1,549.9</b>	<b>1.5</b>	<b>-84.2</b>	<b>-5.2</b>
	<b>Remittance</b>	<b>87,929.1</b>	<b>83.2</b>	<b>-926.3</b>	<b>-1.0</b>	<b>79,472.7</b>	<b>75.6</b>	<b>2,068.8</b>	<b>2.7</b>
	<b>Total</b>	<b>105,650.7</b>	<b>100.0</b>	<b>-463.4</b>	<b>-0.4</b>	<b>105,009.5</b>	<b>100.0</b>	<b>1,381.6</b>	<b>1.3</b>

CHART 1 COMPARISON OF FOREIGN EXCHANGE EXPORT PROCEEDS AND IMPORT PAYMENTS (2004-2006)

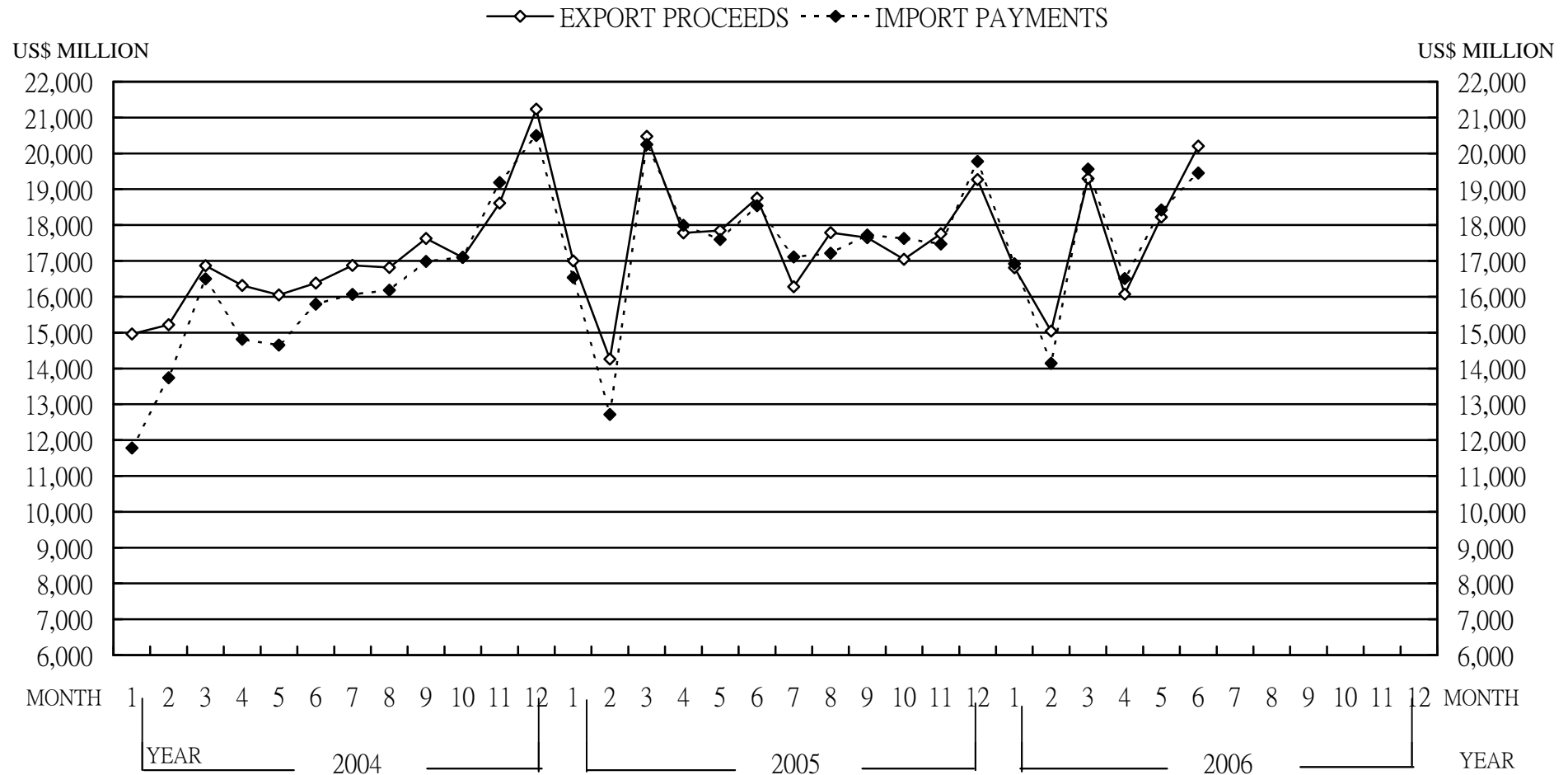
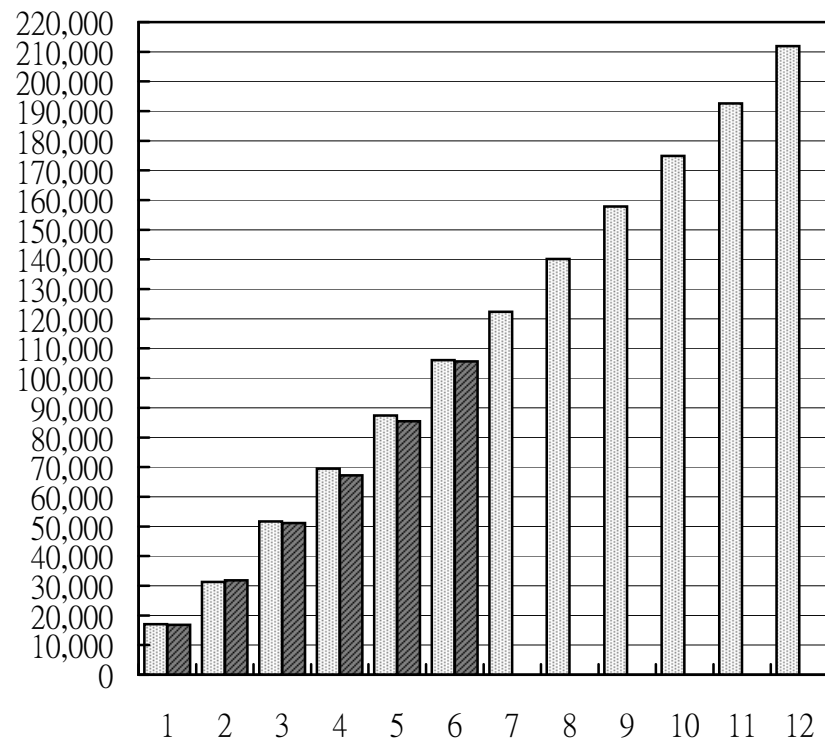


CHART 2 MONTHLY CUMULATIVE OF FOREIGN EXCHANGE EXPORT PROCEEDS AND IMPORT PAYMENTS

(1) EXPORT PROCEEDS

■ 2005 ■ 2006

US\$ MILLION



(2) IMPORT PAYMENTS

■ 2005 ■ 2006

US\$ MILLION

