

# SUMMARY STATISTICS

**JUN. 2001**

**1. Coverage of Statistics:**

All foreign exchange export proceeds and import payments through banks.

**2. Comparison with Jun. 2000 of export proceeds and import payments:**

Export proceeds totaled US\$10,965.0 million, a decrease of US\$3,091.1 million or 22.0% (Table 1), as compared with Jun. 2000.

Import payments totaled US\$ 9,973.6 million, a decrease of US\$ 3,121.7 million or 23.8% (Table 1), as compared with Jun. 2000.

**3. Comparison with Jun. 2000 of export proceeds realized:**

Sold for N.T. Dollars US\$ 1,875.9 million, a decrease of US\$1,458.1 million or 43.7% (Table 2), as compared with Jun. 2000.

Retained with exporters US\$ 9,089.1million, a decrease of US\$1,633.0million or 15.2% (Table 2), as compared with Jun. 2000.

**4. Comparison with Jun. 2000 of import payments made:**

Purchased with N.T. Dollars: US\$3,405.0 million, a decrease of US\$867.9 million or 20.3% (Table 3), as compared with Jun. 2000.

Self-acquired foreign exchange imports US\$6,568.6million, a decrease of US\$2,253.8 million or 25.5% (Table 3), as compared with Jun. 2000.

**5. Foreign exchange exports and imports by type of payment (Table 4):**

**(1) Exports:**

Sight L/C US\$ **1,530.1** million, **14.0%** of total exports.

Usance L/C US\$ **512.6** million, **4.7%** of total exports.

Collection US\$ **369.5** million, **3.4%** of total exports.

Remittance US\$ **8,552.8** million, **77.9%** of total exports.

**(2) Imports:**

Sight L/C US\$ **460.8** million, **4.6%** of total imports.

Usance L/C US\$ **2,384.2** million, **23.9%** of total imports.

Collection US\$ **310.6** million, **3.1%** of total imports.

Remittance US\$ **6,818.0** million, **68.4%** of total imports.

### Comparison of Foreign Exchange Export Proceeds and Import Payments

**Table 1**

Unit: US\$ Million

Item       Month	Year 2001			Year 2000			Comparison with the Same Period			
	Foreign Exchange Export Proceeds	Foreign Exchange Import Payments	Balances	Foreign Exchange Export Proceeds	Foreign Exchange Import Payments	Balances	Last Year			
	(1)	(2)	(1)-(2)	(3)	(4)	(3)-(4)	Foreign exchange Export Proceeds		Foreign exchange Import Payments	
							Amount	%	Amount	%
<b>2001 01-06</b>	70,401.5	62,372.8	8,028.7	77,052.4	70,529.2	6,523.2	-6,650.9	-8.6	-8,156.4	-11.6
<b>2001 01</b>	(R) 12,006.2	9,832.7	(R) 2,173.5	12,343.6	10,029.5	2,314.1	-337.4	-2.7	-196.8	-2.0
<b>2001 02</b>	10,798.8	9,811.5	987.3	10,446.4	10,035.6	410.8	352.4	3.4	-224.1	-2.2
<b>2001 03</b>	(R) 12,807.9	11,910.5	(R) 897.4	14,200.6	13,877.2	323.4	-1,392.7	-9.8	-1,966.7	-14.2
<b>2001 04</b>	(R) 11,641.8	(R) 9,985.8	(R) 1,656.0	13,018.3	11,724.7	1,293.6	-1,376.5	-10.6	-1,738.9	-14.8
<b>2001 05</b>	(R) 12,181.8	(R) 10,858.7	(R) 1,323.1	12,987.4	11,766.9	1,220.5	-805.6	-6.2	-908.2	-7.7
<b>2001 06</b>	10,965.0	9,973.6	991.4	14,056.1	(R) 13,095.3	(R) 960.8	-3,091.1	-22.0	-3,121.7	-23.8

Note : (R) Revised

## Composition of Foreign Exchange Export Proceeds

**Table 2**

**Unit: US\$ Million**

Item / Month	Foreign Exchange Export Proceeds			Comparison with the Same Period Last Year			
	Total	Sold for N.T. Dollars	Retained with Exporters	Sold for N.T. Dollars		Retained with Exporters	
	(1)=(2)+(3)	(2)	(3)	Amount	%	Amount	%
<b>2001 01-06</b>	70,401.5	13,494.8	56,906.7	-5,177.4	-27.7	-1,473.5	-2.5
<b>2001 01</b>	(R) 12,006.2	2,229.9	(R) 9,776.3	-909.7	-29.0	572.3	6.2
<b>2001 02</b>	10,798.8	2,147.5	8,651.3	-309.0	-12.6	661.4	8.3
<b>2001 03</b>	(R) 12,807.9	2,571.0	(R) 10,236.9	-786.7	-23.4	-606.0	-5.6
<b>2001 04</b>	(R) 11,641.8	(R) 2,274.1	(R) 9,367.7	-843.1	-27.0	-533.4	-5.4
<b>2001 05</b>	(R) 12,181.8	(R) 2,396.4	(R) 9,785.4	-870.8	-26.7	65.2	0.7
<b>2001 06</b>	10,965.0	1,875.9	9,089.1	-1,458.1	-43.7	-1,633.0	-15.2

**Note :** \* The export proceeds may be used to repay foreign currency loans or placed in the foreign currency deposits of domestic banks, etc..  
And later on the deposits may be sold for N.T. Dollars, used to pay for importation of goods, or outwardly remitted whenever needed.  
The deposits which have been sold for N.T. Dollars shall no longer be included in the figure of column (2) of this table.

### Composition of Foreign Exchange Import Payments

**Table 3**

**Unit: US\$ Million**

Item      <b>Month</b>	Foreign Exchange Import Payments			Comparison with the Same Period Last Year			
	Total	Purchased with N.T. Dollars	Non- Purchased from Banks	Purchased with N.T. Dollars		Non-Purchased from Banks	
	(1)=(2)+(3)	(2)	(3)	Amount	%	Amount	%
<b>2001 01-06</b>	62,372.8	20,748.4	41,624.4	-3,775.6	-15.4	-4,380.8	-9.5
<b>2001 01</b>	9,832.7	3,457.8	6,374.9	-86.9	-2.5	-109.9	-1.7
<b>2001 02</b>	9,811.5	3,056.7	6,754.8	-350.8	-10.3	126.7	1.9
<b>2001 03</b>	11,910.5	3,867.5	8,043.0	-1,353.7	-25.9	-613.0	-7.1
<b>2001 04</b>	(R) 9,985.8	(R) 3,114.0	6,871.8	-825.2	-20.9	-913.7	-11.7
<b>2001 05</b>	(R) 10,858.7	(R) 3,847.4	(R) 7,011.3	-291.1	-7.0	-617.1	-8.1
<b>2001 06</b>	9,973.6	3,405.0	6,568.6	-867.9	-20.3	-2,253.8	-25.5

**Note : \* The importers withdraw their foreign currency deposits from banks for import payments, etc.**

**Foreign Exchange Export Proceeds and Import Payments by Type of Payment  
(Current Month)**

**Table 4**

**Unit: US\$ Million**

Type of Payment	Item	Foreign Exchange Export Proceeds				Foreign Exchange Import Payments			
		<b>Jun. 2001</b>		Comparison with <b>Jun. 2000</b>		<b>Jun. 2001</b>		Comparison with <b>Jun. 2000</b>	
		Amount	%	Amount	%	Amount	%	Amount	%
Sight L/C		1,530.1	14.0	-704.1	-31.5	460.8	4.6	-137.1	-22.9
Usance L/C		512.6	4.7	-133.2	-20.6	2,384.2	23.9	-1,348.6	-36.1
Collection		369.5	3.4	-102.0	-21.6	310.6	3.1	-276.1	-47.1
Remittance		8,552.8	77.9	-2,151.8	-20.1	6,818.0	68.4	-1,359.9	-16.6
<b>Total</b>		<b>10,965.0</b>	<b>100.0</b>	<b>-3,091.1</b>	<b>-22.0</b>	<b>9,973.6</b>	<b>100.0</b>	<b>-3,121.7</b>	<b>-23.8</b>

**Foreign Exchange Export Proceeds and Import Payments by Type of Payment  
(Jan. To Date)**

**Table 5**

**Unit: US\$ Million**

Type of Payment	Item	Foreign Exchange Export Proceeds				Foreign Exchange Import Payments			
		Jan.-Jun. 2001		Comparison with Jan.-Jun. 2000		Jan.-Jun. 2001		Comparison with Jan.-Jun. 2000	
		Amount	%	Amount	%	Amount	%	Amount	%
Sight L/C		9,440.6	13.4	-2,537.4	-21.2	2,451.8	3.9	-539.7	-18.0
Usance L/C		3,142.7	4.5	-269.5	-7.9	16,263.6	26.1	-4,312.3	-21.0
Collection		2,289.5	3.3	-399.7	-14.9	1,988.2	3.2	-1,350.9	-40.5
Remittance		55,528.7	78.8	-3,444.3	-5.8	41,669.2	66.8	-1,953.5	-4.5
<b>Total</b>		<b>70,401.5</b>	<b>100.0</b>	<b>-6,650.9</b>	<b>-8.6</b>	<b>62,372.8</b>	<b>100.0</b>	<b>-8,156.4</b>	<b>-11.6</b>

CHART 1 COMPARISON OF FOREIGN EXCHANGE EXPORT PROCEEDS AND IMPORT PAYMENTS (1999-2001)

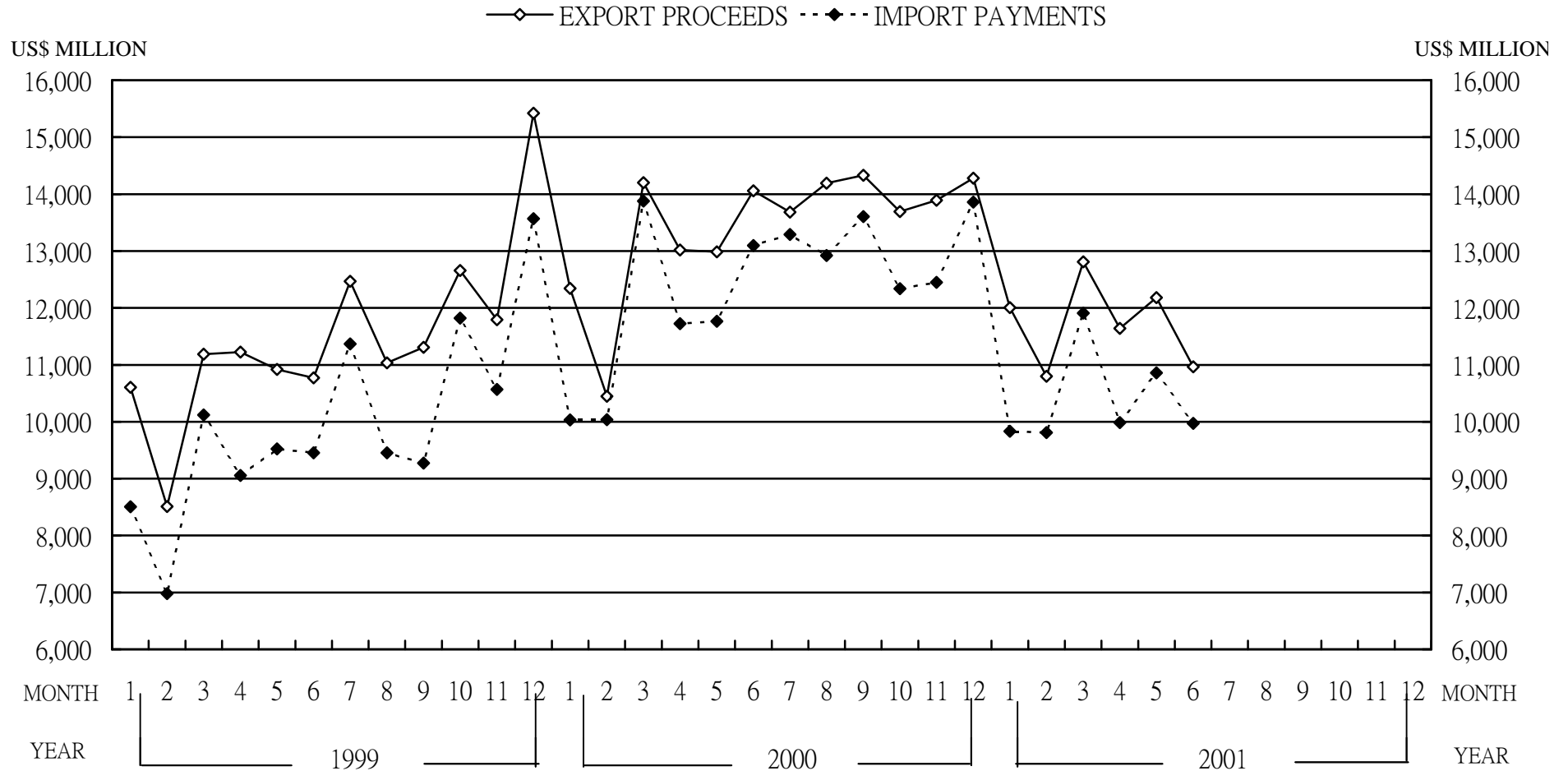
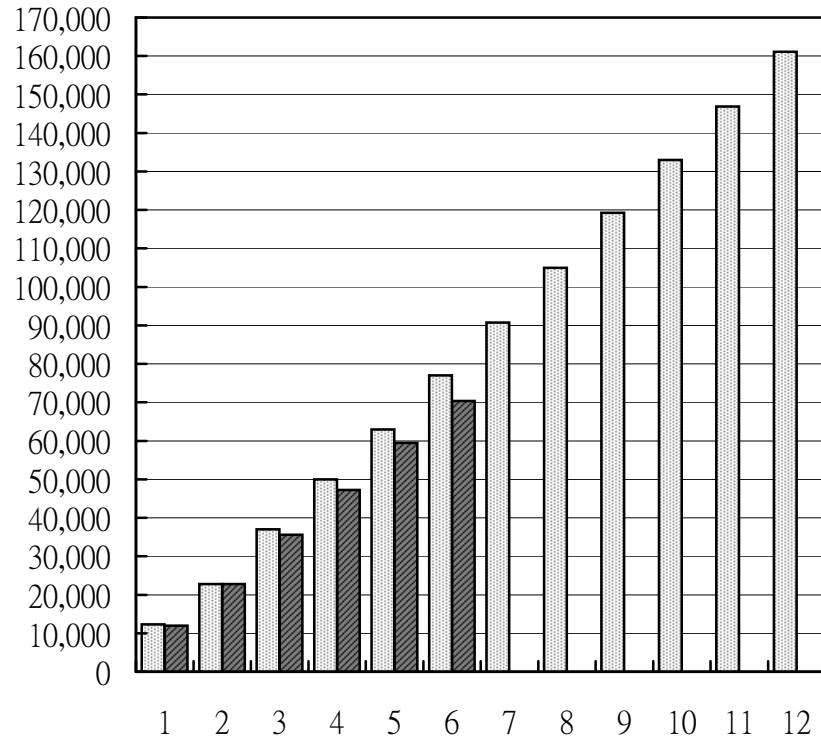


CHART 2 MONTHLY CUMULATIVE OF FOREIGN EXCHANGE EXPORT PROCEEDS AND IMPORT PAYMENTS

(1) EXPORT PROCEEDS

■ 2000 ■ 2001

US\$ MILLION



(2) IMPORT PAYMENTS

■ 2000 ■ 2001

US\$ MILLION

