

SUMMARY STATISTICS

JAN. 2008

1. Coverage of Statistics:

All foreign exchange export proceeds and import payments through banks.

2. Comparison with Jan. 2007 of export proceeds and import payments:

Export proceeds totaled US\$ 24,764.4 million, an increase of US\$ 3,273.3 million or 15.2% (Table 1), as compared with Jan. 2007.

Import payments totaled US\$ 22,910.9 million, an increase of US\$ 4,208.3 million or 22.5% (Table 1), as compared with Jan. 2007.

3. Comparison with Jan. 2007 of export proceeds realized:

Sold for N.T. Dollars US\$ 2,522.7 million, an increase of US\$ 9.0 million or 0.4% (Table 2), as compared with Jan. 2007.

Retained with exporters US\$ 22,241.7 million, an increase of US\$ 3,264.3 million or 17.2% (Table 2), as compared with Jan. 2007.

4. Comparison with Jan. 2007 of import payments made:

Purchased with N.T. Dollars: US\$ 4,687.8 million, an increase of US\$ 603.1 million or 14.8% (Table 3), as compared with Jan. 2007.

Self-acquired foreign exchange imports US\$ 18,223.1 million, an increase of US\$ 3,605.2 million or 24.7% (Table 3), as compared with Jan. 2007.

5. Foreign exchange exports and imports by type of payment (Table 4):

(1) Exports:

Sight L/C US\$ 2,257.6 million, 9.1% of total exports.

Usance L/C US\$ 1,406.2 million, 5.7% of total exports.

Collection US\$ 424.2 million, 1.7% of total exports.

Remittance US\$ 20,676.4 million, 83.5% of total exports.

(2) Imports:

Sight L/C US\$ 682.8 million, 3.0% of total imports.

Usance L/C US\$ 4,308.7 million, 18.8% of total imports.

Collection US\$ 312.6 million, 1.4% of total imports.

Remittance US\$ 17,606.8 million, 76.8% of total imports.

Comparison of Foreign Exchange Export Proceeds and Import Payments

Table 1

Unit: US\$ Million

Item Month	Year 2008			Year 2007			Comparison with the Same Period			
	Foreign Exchange Export Proceeds (1)	Foreign Exchange Import Payments (2)	Balances (1)-(2)	Foreign Exchange Export Proceeds (3)	Foreign Exchange Import Payments (4)	Balances (3)-(4)	Last Year			
							Foreign exchange Export Proceeds		Foreign exchange Import Payments	
							Amount	%	Amount	%
2008 01	24,764.4	22,910.9	1,853.5	21,491.1	18,702.6	2,788.5	3,273.3	15.2	4,208.3	22.5

**Foreign Exchange Export Proceeds and Import Payments by Type of Payment
(Current Month)**

Table 4

Unit: US\$ Million

Type of Payment	Item	Foreign Exchange Export Proceeds				Foreign Exchange Import Payments			
		Jan. 2008		Comparison with Jan. 2007		Jan. 2008		Comparison with Jan. 2007	
		Amount	%	Amount	%	Amount	%	Amount	%
Sight L/C		2,257.6	9.1	354.8	18.6	682.8	3.0	75.2	12.4
Usance L/C		1,406.2	5.7	472.8	50.7	4,308.7	18.8	794.0	22.6
Collection		424.2	1.7	46.9	12.4	312.6	1.4	-57.0	-15.4
Remittance		20,676.4	83.5	2,398.8	13.1	17,606.8	76.8	3,396.1	23.9
Total		24,764.4	100.0	3,273.3	15.2	22,910.9	100.0	4,208.3	22.5

CHART 1 COMPARISON OF FOREIGN EXCHANGE EXPORT PROCEEDS AND IMPORT PAYMENTS (2006-2008)

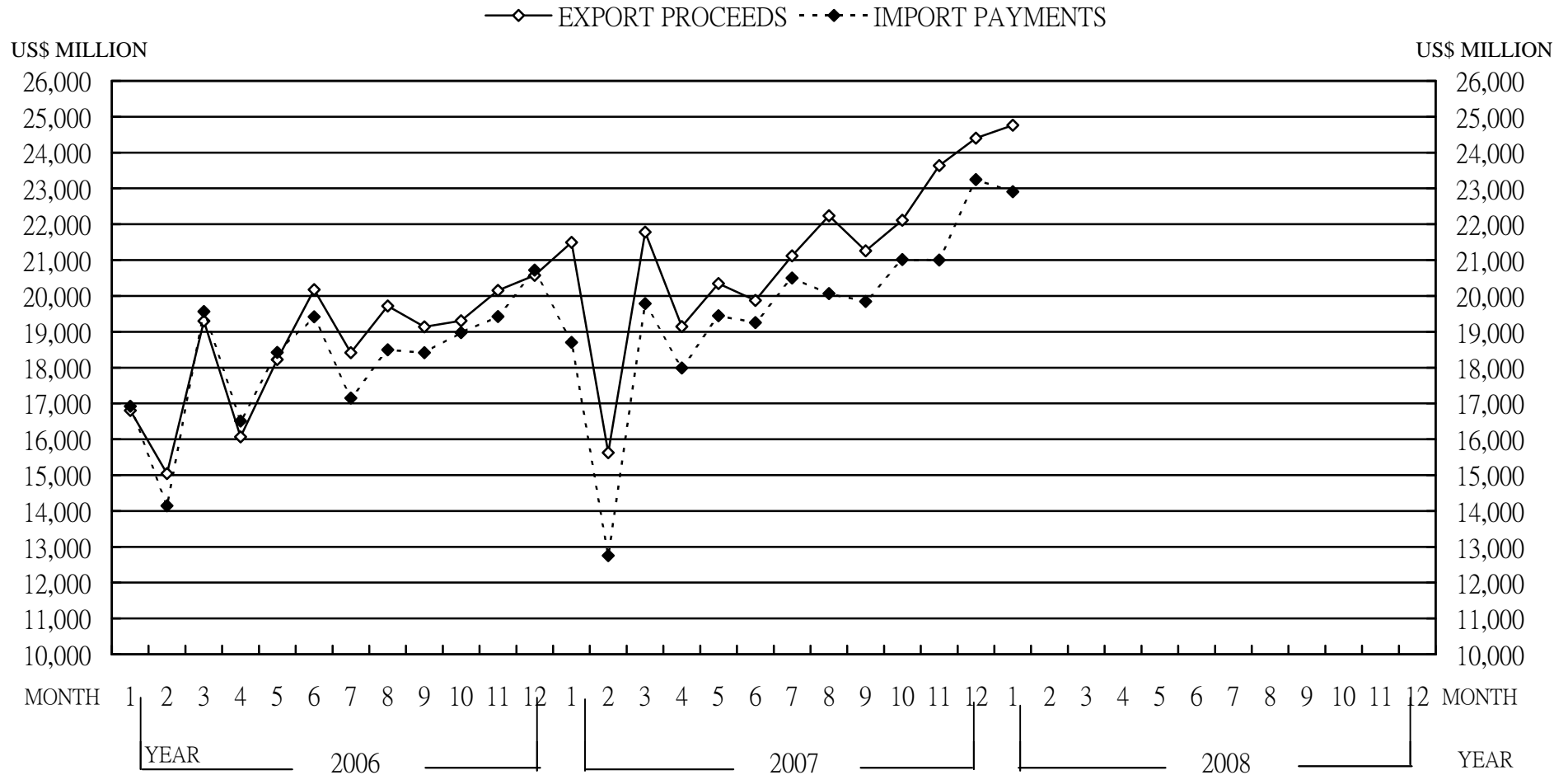
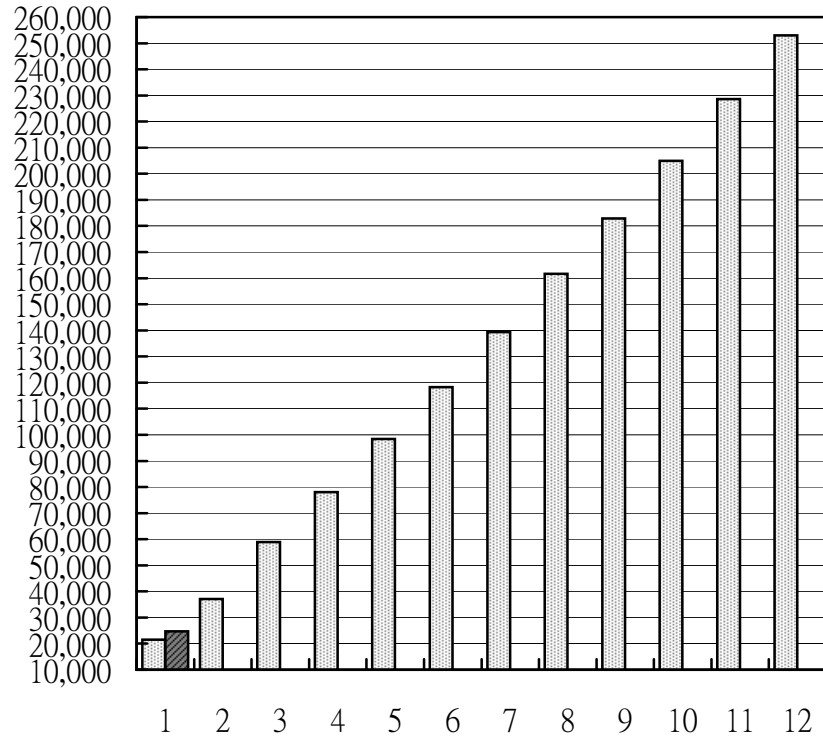


CHART 2 MONTHLY CUMULATIVE OF FOREIGN EXCHANGE EXPORT PROCEEDS AND IMPORT PAYMENTS

(1) EXPORT PROCEEDS

■ 2007 ■ 2008

US\$ MILLION



(2) IMPORT PAYMENTS

■ 2007 ■ 2008

US\$ MILLION

