

# SUMMARY STATISTICS

**APR. 2001**

**1. Coverage of Statistics:**

All foreign exchange export proceeds and import payments through banks.

**2. Comparison with Apr. 2000 of export proceeds and import payments:**

Export proceeds totaled US\$11,645.5 million, a decrease of US\$1,372.8 million or 10.5% (Table 1), as compared with Apr. 2000.

Import payments totaled US\$ 9,986.0 million, a decrease of US\$ 1,738.7 million or 14.8% (Table 1), as compared with Apr. 2000.

**3. Comparison with Apr. 2000 of export proceeds realized:**

Sold for N.T. Dollars US\$ 2,273.8 million, a decrease of US\$843.4 million or 27.1% (Table 2), as compared with Apr. 2000.

Retained with exporters US\$ 9,371.7 million, a decrease of US\$529.4million or 5.3% (Table 2), as compared with Apr. 2000.

**4. Comparison with Apr. 2000 of import payments made:**

Purchased with N.T. Dollars: US\$3,114.0 million, a decrease of US\$825.2 million or 20.9% (Table 3), as compared with Apr. 2000.

Self-acquired foreign exchange imports US\$6,872.0million, a decrease of US\$913.5 million or 11.7% (Table 3), as compared with Apr. 2000.

**5. Foreign exchange exports and imports by type of payment (Table 4):**

**(1) Exports:**

**Sight L/C** US\$ **1,567.1** million, **13.5%** of total exports.

**Usance L/C** US\$ **513.6** million, **4.4%** of total exports.

**Collection** US\$ **388.6** million, **3.3%** of total exports.

**Remittance** US\$ **9,176.2** million, **78.8%** of total exports.

**(2) Imports:**

**Sight L/C** US\$ **465.8** million, **4.7%** of total imports.

**Usance L/C** US\$ **2,420.5** million, **24.2%** of total imports.

**Collection** US\$ **301.9** million, **3.0%** of total imports.

**Remittance** US\$ **6,797.8** million, **68.1%** of total imports.





### Composition of Foreign Exchange Import Payments

**Table 3**

**Unit: US\$ Million**

Item          <b>Month</b>	Foreign Exchange Import Payments			Comparison with the Same Period Last Year			
	Total	Purchased with N.T. Dollars	Non- Purchased from Banks	Purchased with N.T. Dollars		Non-Purchased from Banks	
	(1)=(2)+(3)	(2)	(3)	Amount	%	Amount	%
<b>2001 01-04</b>	41,540.7	13,496.0	28,044.7	-2,616.5	-16.2	-1,509.8	-5.1
<b>2001 01</b>	9,832.7	3,457.8	6,374.9	-86.9	-2.5	-109.9	-1.7
<b>2001 02</b>	(R) 9,811.5	(R) 3,056.7	6,754.8	-350.8	-10.3	126.7	1.9
<b>2001 03</b>	(R) 11,910.5	(R) 3,867.5	(R) 8,043.0	-1,353.6	-25.9	-613.1	-7.1
<b>2001 04</b>	9,986.0	3,114.0	6,872.0	-825.2	-20.9	-913.5	-11.7

**Note : \* The importers withdraw their foreign currency deposits from banks for import payments, etc.**

**Foreign Exchange Export Proceeds and Import Payments by Type of Payment  
(Current Month)**

**Table 4**

**Unit: US\$ Million**

Type of Payment	Item	Foreign Exchange Export Proceeds				Foreign Exchange Import Payments			
		<b>Apr. 2001</b>		Comparison with <b>Apr. 2000</b>		<b>Apr. 2001</b>		Comparison with <b>Apr. 2000</b>	
		Amount	%	Amount	%	Amount	%	Amount	%
Sight L/C		1,567.1	13.5	-423.1	-21.3	465.8	4.7	-40.9	-8.1
Usance L/C		513.6	4.4	-49.0	-8.7	2,420.5	24.2	-864.1	-26.3
Collection		388.6	3.3	-65.5	-14.4	301.9	3.0	-282.3	-48.3
Remittance		9,176.2	78.8	-835.2	-8.3	6,797.8	68.1	-551.4	-7.5
<b>Total</b>		<b>11,645.5</b>	<b>100.0</b>	<b>-1,372.8</b>	<b>-10.5</b>	<b>9,986.0</b>	<b>100.0</b>	<b>-1,738.7</b>	<b>-14.8</b>

**Foreign Exchange Export Proceeds and Import Payments by Type of Payment  
(Jan. To Date)**

**Table 5**

**Unit: US\$ Million**

Type of Payment	Item	Foreign Exchange Export Proceeds				Foreign Exchange Import Payments			
		Jan.-Apr. 2001		Comparison with Jan.-Apr. 2000		Jan.-Apr. 2001		Comparison with Jan.-Apr. 2000	
		Amount	%	Amount	%	Amount	%	Amount	%
Sight L/C		6,190.6	13.0	-1,428.2	-18.7	1,559.0	3.8	-372.7	-19.3
Usance L/C		2,057.6	4.3	-82.2	-3.8	10,780.1	26.0	-2,777.5	-20.5
Collection		1,524.2	3.2	-232.6	-13.2	1,304.0	3.1	-867.1	-39.9
Remittance		37,781.6	79.5	-711.9	-1.8	27,897.6	67.1	-109.0	-0.4
<b>Total</b>		<b>47,554.0</b>	<b>100.0</b>	<b>-2,454.9</b>	<b>-4.9</b>	<b>41,540.7</b>	<b>100.0</b>	<b>-4,126.3</b>	<b>-9.0</b>

CHART 1 COMPARISON OF FOREIGN EXCHANGE EXPORT PROCEEDS AND IMPORT PAYMENTS (1999-2001)

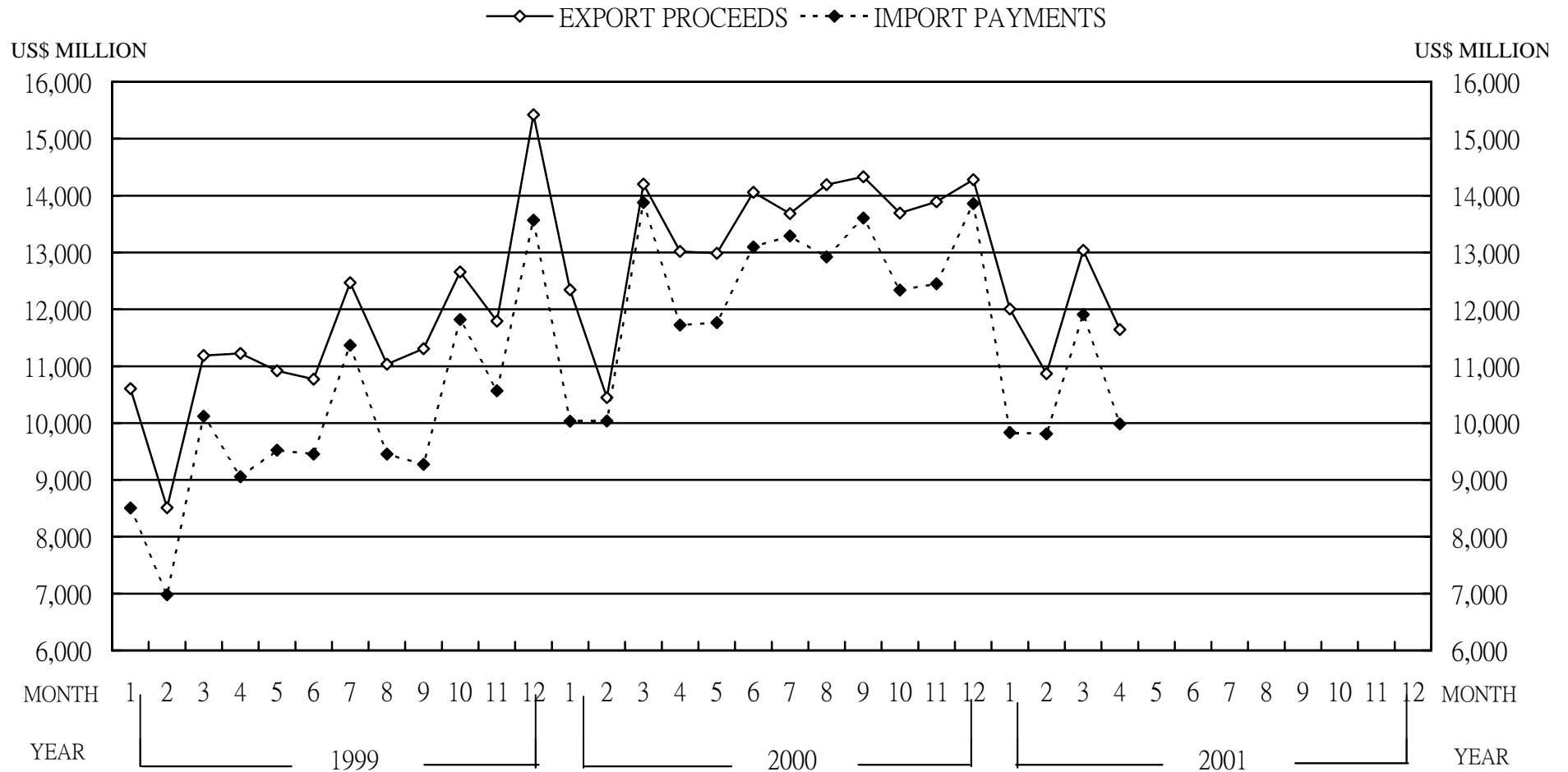
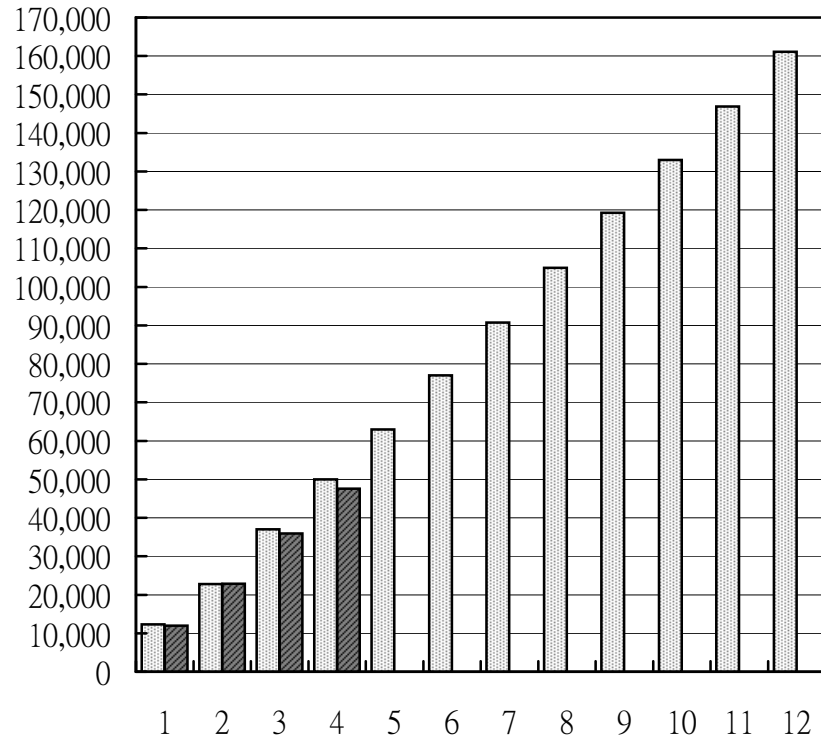


CHART 2 MONTHLY CUMULATIVE OF FOREIGN EXCHANGE EXPORT PROCEEDS AND IMPORT PAYMENTS

(1) EXPORT PROCEEDS

■ 2000 ■ 2001

US\$ MILLION



(2) IMPORT PAYMENTS

■ 2000 ■ 2001

US\$ MILLION

