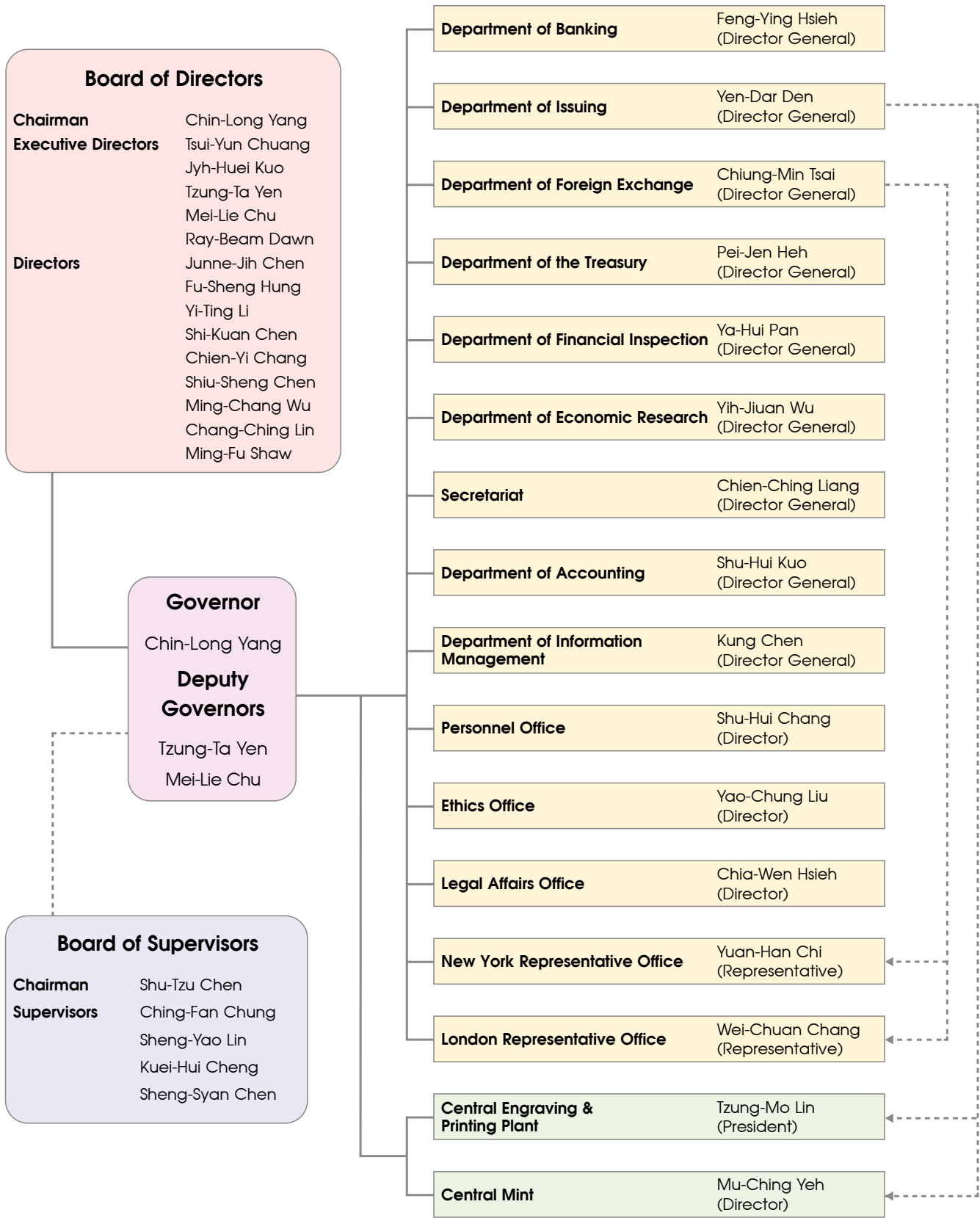


Organization and Management of the CBC



As of February 2025



Chairman
Board of Directors
Governor
Chin-Long Yang



Executive Director
Tsui-Yun Chuang



Executive Director
Jyh-Huei Kuo



Executive Director
Deputy Governor
Tzung-Ta Yen



Executive Director
Deputy Governor
Mei-Lie Chu



Executive Director
Ray-Beam Dawn



Director
Junne-Jih Chen



Director
Fu-Sheng Hung



Director
Yi-Ting Li



Director
Shi-Kuan Chen



Director
Chien-Yi Chang



Director
Shiu-Sheng Chen



Director
Ming-Chang Wu



Director
Chang-Ching Lin



Director
Ming-Fu Shaw



Chairman
Board of Supervisors
Shu-Tzu Chen



Supervisor
Ching-Fan Chung



Supervisor
Sheng-Yao Lin



Supervisor
Kuei-Hui Cheng



Supervisor
Sheng-Syan Chen