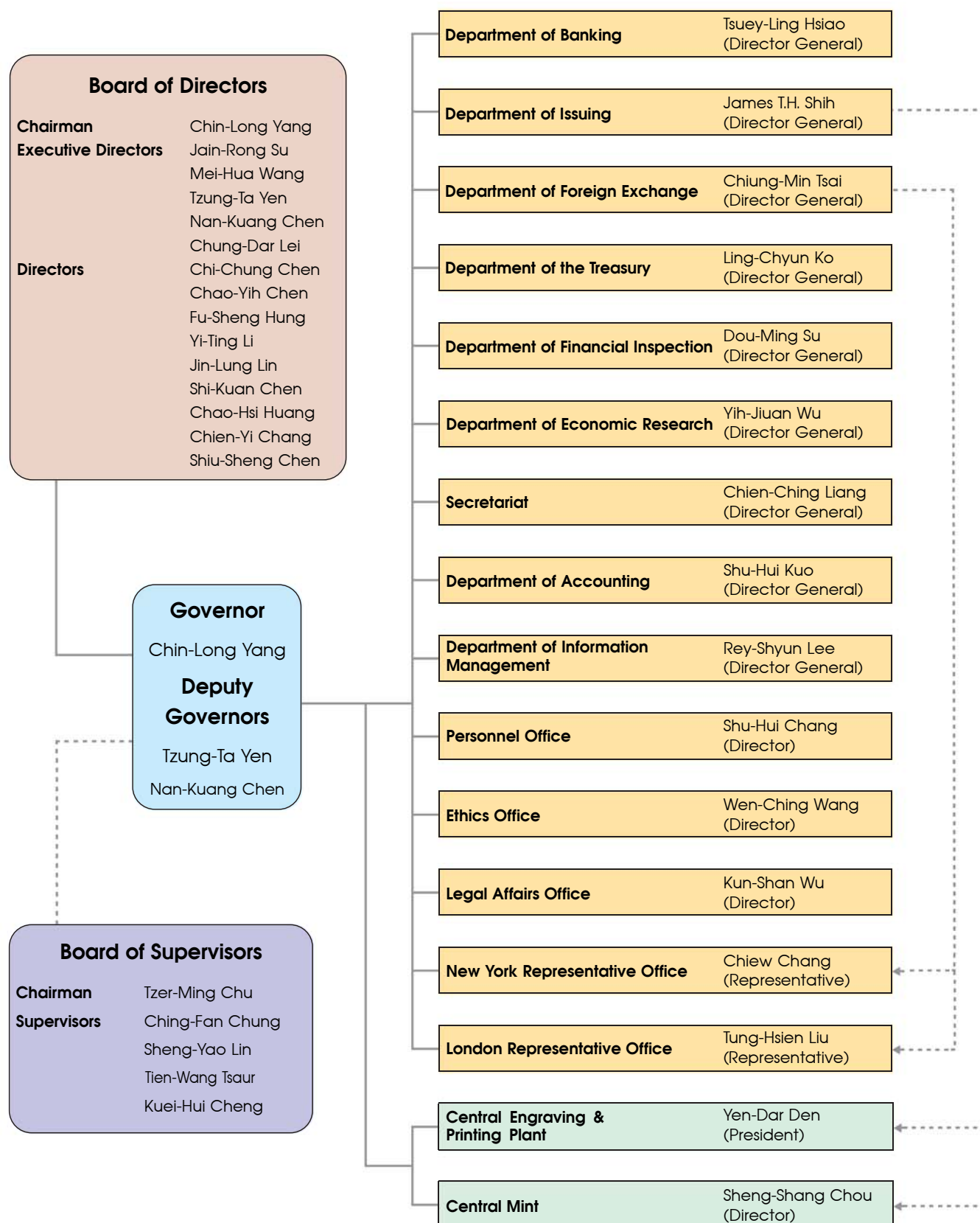


# Organization and Management of the CBC



As of January 2021



Chairman  
Board of Directors  
Governor  
Chin-Long Yang



Executive Director  
Jain-Rong Su



Executive Director  
Mei-Hua Wang



Executive Director  
Deputy Governor  
Tzung-Ta Yen



Executive Director  
Deputy Governor  
Nan-Kuang Chen



Executive Director  
Chung-Dar Lei



Director  
Chi-Chung Chen



Director  
Chao-Yih Chen



Director  
Fu-Sheng Hung



Director  
Yi-Ting Li



Director  
Jin-Lung Lin



Director  
Shi-Kuan Chen



Director  
Chao-Hsi Huang



Director  
Chien-Yi Chang



Director  
Shiu-Sheng Chen



Chairman  
Board of Supervisors  
Tzer-Ming Chu



Supervisor  
Ching-Fan Chung



Supervisor  
Sheng-Yao Lin



Supervisor  
Tien-Wang Tsaur



Supervisor  
Kuei-Hui Cheng