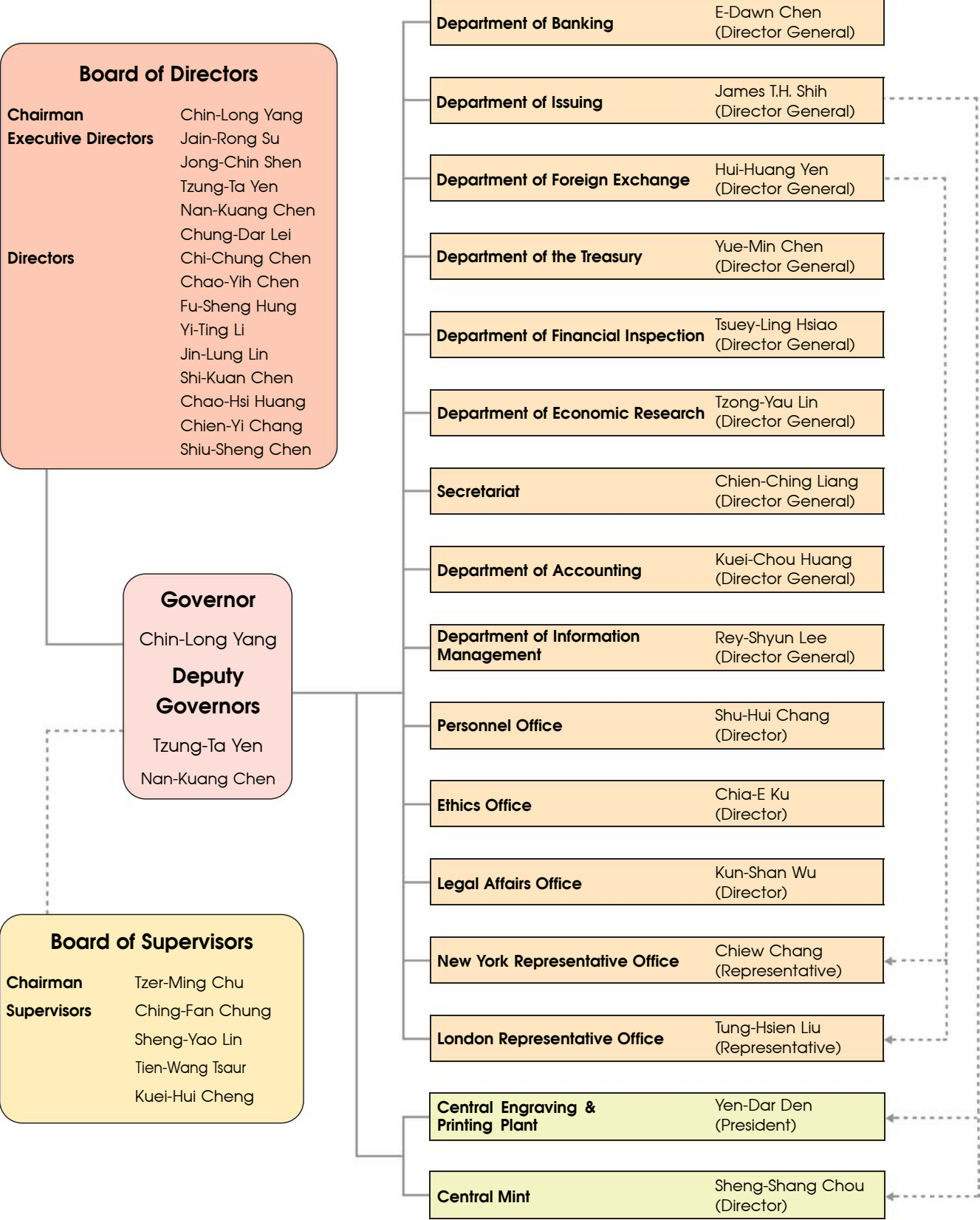


Organization and Management of the CBC



As of February 2020



Chairman
Board of Directors
Governor
Chin-Long Yang



Executive Director
Jain-Rong Su



Executive Director
Jong-Chin Shen



Executive Director
Deputy Governor
Tzung-Ta Yen



Executive Director
Deputy Governor
Nan-Kuang Chen



Executive Director
Chung-Dar Lei



Director
Chi-Chung Chen



Director
Chao-Yih Chen



Director
Fu-Sheng Hung



Director
Yi-Ting Li



Director
Jin-Lung Lin



Director
Shi-Kuan Chen



Director
Chao-Hsi Huang



Director
Chien-Yi Chang



Director
Shiu-Sheng Chen



Chairman
Board of Supervisors
Tzer-Ming Chu



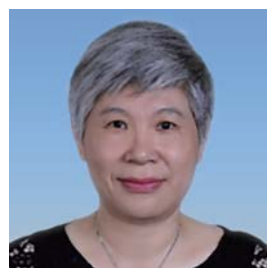
Supervisor
Ching-Fan Chung



Supervisor
Sheng-Yao Lin



Supervisor
Tien-Wang Tsaur



Supervisor
Kuei-Hui Cheng