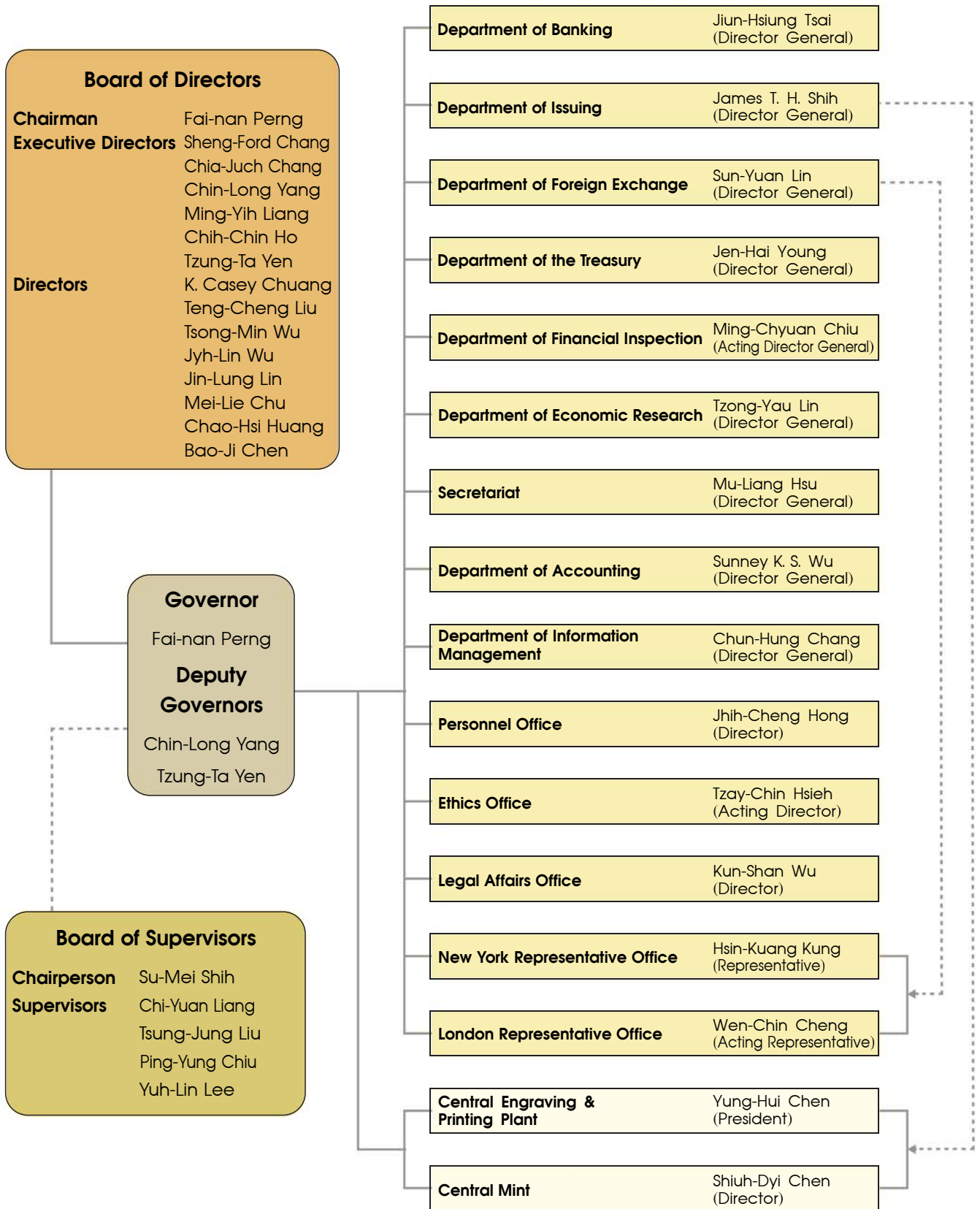


# Organization and Management of the CBC



—— direct reporting    - - - - supervision

As of May 2013



Chairman  
Board of Directors  
Governor  
Fai-nan Perng



Executive Director  
Sheng-Ford Chang



Executive Director  
Chia-Juch Chang



Executive Director  
Deputy Governor  
Chin-Long Yang



Executive Director  
Ming-Yih Liang



Executive Director  
Chih-Chin Ho



Executive Director  
Deputy Governor  
Tzung-Ta Yen



Director  
K. Casey Chuang



Director  
Teng-Cheng Liu



Director  
Tsong-Min Wu



Director  
Jyh-Lin Wu



Director  
Jin-Lung Lin



Director  
Mei-Lie Chu



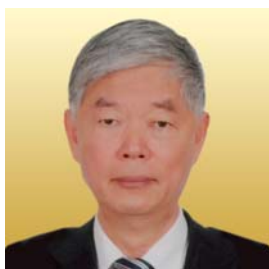
Director  
Chao-Hsi Huang



Director  
Bao-Ji Chen



Chairperson  
Board of Supervisors  
Su-Mei Shih



Supervisor  
Chi-Yuan Liang



Supervisor  
Tsung-Jung Liu



Supervisor  
Ping-Yung Chiu



Supervisor  
Yuh-Lin Lee